





CONTENTS

4	AOKE	82	Workstation equipment
5	Mission/vision	103	Executive furniture
7	Green, health & comfort	115	Desk additions
8	Timeline	129	Seating
11	Certifications	152	Outlet
13	Desking	157	Product specifications
67	Table tops	162	Product dimensions
72	Acoustics		



CERTIFICATION

The following certificates apply to the products in the catalogue.

ISO 9001

This certificate shows that production processes meet international standards and displays that great important is attached to continuous improvement of production processes.



CE

CE certification is a key indication that products comply with the legislation of the European Union regarding electronics.



NEN EN527

The NEN EN527 certification specifies that products comply with safety, strength and durability requirements for work tables and desks used for computer and office tasks.

ROHS

ROHS stands for Restrictions of Hazardous Substances. It ensures the compliance of the regulations regarding restricting the use of hazardous substances in products and used materials.



NEN EN1335

A European standard that specifies dimensions, adjustment possibilities and corresponding adjustment ranges. This certificate ensures that office chairs are suitable for the majority of the European population.



1-MOTOR DESKS

Drive

 PAGE 14 / 15



DRIVE

1-motor desks

■ For product dimensions see page 162



For assembly videos and instructions

Scan me



View our range of table tops at page 67

Important product information & main specifications

Adjustable height range (mm)	: 690 - 1150
Adjustable range frame size (mm)	: 1075 - 1720
Lifting capacity (kg)	: 100
Warranty period (years)	: 5
Available colours	: Aluminium : Black : White
Gross weight (kg)	: 28

■ For product specifications see page 157

Recommended accessories



Keeper



Tiltable cable tray



Individual cable tube

Certificates





2-MOTOR DESKS

Joy	—————	PAGE 18 / 19
Flow	—————	PAGE 20 / 21
Move	—————	PAGE 22 / 23
Ring	—————	PAGE 24 / 25
Little	—————	PAGE 26 / 27
Ypsilon	—————	PAGE 28 / 29
Home	—————	PAGE 30 / 31
Wing set	—————	PAGE 32 / 33



JOY

2-motor desks

■ For product dimensions see page 162



For assembly videos and instructions

Scan me



View our range of table tops at page 67

Important product information & main specifications

Adjustable height range (mm)	: 625 - 1275
Adjustable range frame size (mm)	: 1075 - 1800
Lifting capacity (kg)	: 120
Warranty period (years)	: 5
Available colours	: Aluminium : Black : White : 30,8

Gross weight (kg)

■ For product specifications see page 157

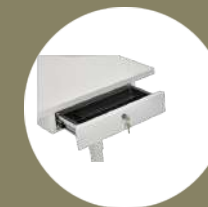
Recommended accessories



Tiltable cable tray



Electrification starter kit



Personal drawer

Certificates





FLOW

2-motor desks

■ For product dimensions see page 162



For assembly videos and instructions

Scan me



View our range of table tops at page 67

Important product information & main specifications

Adjustable height range (mm)	: 625 - 1275
Adjustable range frame size (mm)	: 1075 - 1800
Lifting capacity (kg)	: 120
Warranty period (years)	: 5
Available colours	: Aluminium : Black : White
Gross weight (kg)	: 29,1

■ For product specifications see page 157

Recommended accessories



Keeper



Electrification
starter kit



Charge -
Wireless
charger

Certificates





MOVE

2-motor desks

■ For product dimensions see page 162



For assembly videos and instructions

Scan me



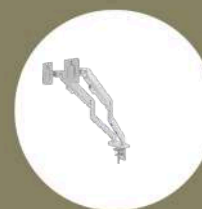
View our range of table tops at page 67

Important product information & main specifications

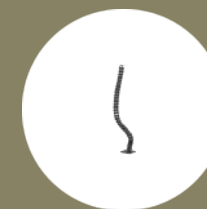
Adjustable height range (mm)	: 625 - 1275
Adjustable range frame size (mm)	: 1075 - 1800
Lifting capacity (kg)	: 120
Warranty period (years)	: 5
Available colours	: Aluminium : Black : White
Gross weight (kg)	: 31,5

■ For product specifications see page 157

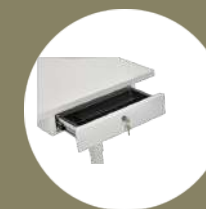
Recommended accessories



Twin keeper



Individual cable tube



Personal drawer

Certificates





RING

2-motor desks

■ For product dimensions see page 162



For assembly videos and instructions

Scan me



View our range of table tops at page 67

Important product information & main specifications

Adjustable height range (mm)	: 625 - 1275
Adjustable range frame size (mm)	: 1075 - 1800
Lifting capacity (kg)	: 120
Warranty period (years)	: 5
Available colours	: Aluminium : Black : White
Gross weight (kg)	: 32

■ For product specifications see page 157

Recommended accessories



Tiltable cable tray



Universal CPU holder



Electrification starter kit

Certificates





LITTLE

2-motor desks

■ For product dimensions see page 162



For assembly videos and instructions

Scan me



View our range of table tops at page 67

Important product information & main specifications

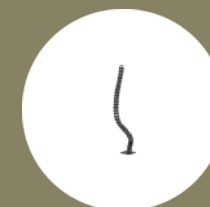
Adjustable height range (mm)	: 690 - 1150
Adjustable range frame size (mm)	: 700 - 1100
Lifting capacity (kg)	: 120,5
Warranty period (years)	:
Available colours	: Aluminium : Black : White
Gross weight (kg)	: 24,5

■ For product specifications see page 157

Recommended accessories



Keeper



Individual
cable tube



Charge -
Wireless
charger

Certificates





YPSILON

2-motor desks

■ For product dimensions see page 162



For assembly videos and instructions

Scan me



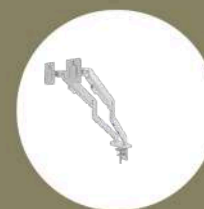
View our range of table tops at page 67

Important product information & main specifications

Adjustable height range (mm)	: 710 - 1170
Adjustable range frame size (mm)	: 1075 - 1790
Lifting capacity (kg)	: 120
Warranty period (years)	: 5
Available colours	: Aluminium : Black : White
Gross weight (kg)	: 38,5

■ For product specifications see page 157

Recommended accessories



Twin keeper



Tiltable cable tray



Universal CPU holder

Certificates





HOME

2-motor desks

■ For product dimensions see page 162



For assembly videos and instructions

Scan me



View our range of table tops at page 67

Important product information & main specifications

Adjustable height range (mm)	: 710 - 1190
Lifting capacity (kg)	: 60
Warranty period (years)	: 2
Available colours	: Black : White
Gross weight (kg)	: 42,8

■ For product specifications see page 157

Recommended accessories



Anti-fatigue
mat



Balance



Desk swivel
castors (4
pcs)

Certificates





WING SET

2-motor desks

■ For product dimensions see page 162



BENCH DESKS

Move DUO	=====	PAGE 36 / 37
Flow DUO	=====	PAGE 38 / 39
Handle DUO	=====	PAGE 40 / 41



MOVE DUO

Bench desks

■ For product dimensions see page 162



For assembly videos and instructions

Scan me



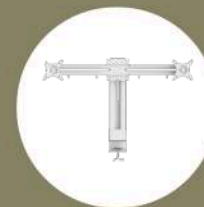
View our range of table tops at page 67

Important product information & main specifications

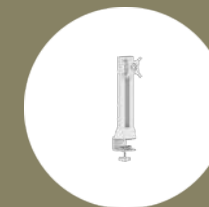
Adjustable height range (mm)	: 625 - 1275
Adjustable range frame size (mm)	: 1075 - 1800
Lifting capacity (kg)	: 120 per side
Warranty period (years)	: 5
Available colours	: Aluminium : Black : White
Gross weight (kg)	: 80,2

■ For product specifications see page 157

Recommended accessories



Monitor arm
bracket



Manual single
monitor arm



Bench cable
tube

Certificates





FLOW DUO

Bench desks

■ For product dimensions see page 162



For assembly videos and instructions

Scan me



View our range of table tops at page 67

Important product information & main specifications

Adjustable height range (mm)	: 625 - 1275
Adjustable range frame size (mm)	: 1075 - 1800
Lifting capacity (kg)	: 120 per side
Warranty period (years)	: 5
Available colours	: Aluminium : Black : White
Gross weight (kg)	: 72

■ For product specifications see page 157

Recommended accessories



Universal CPU
holder



Bench cable
tube



Electrification
starter kit

Certificates





HANDLE DUO

Bench desks

■ For product dimensions see page 162



For assembly videos and instructions

Scan me



View our range of table tops at page 67

Important product information & main specifications

Adjustable height range (mm)	: 680 - 1130
Adjustable range frame size (mm)	: 1150 - 1800
Lifting capacity (kg)	: 80 per side
Warranty period (years)	: 5
Available colours	: Aluminium : Black : White
Gross weight (kg)	: 56,3

■ For product specifications see page 157

Recommended accessories



Tiltable cable tray



Bench cable tube



Multi power socket

Certificates





3-MOTOR DESKS

Twist (90°)	=====	PAGE 44 / 45
Hex (120°)	=====	PAGE 46 / 47
Link (180°)	=====	PAGE 48 / 49



TWIST (90°)

3-motor desks

■ For product dimensions see page 162



For assembly videos and instructions

Scan me



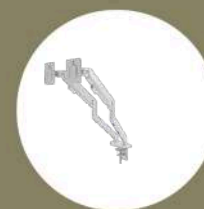
View our range of table tops at page 67

Important product information & main specifications

Adjustable height range (mm)	: 625 - 1275
Adjustable range frame size (mm)	: 1075 - 1800
Lifting capacity (kg)	: 150
Warranty period (years)	: 5
Available colours	: Aluminium : Black : White
Gross weight (kg)	: 49,1

■ For product specifications see page 157

Recommended accessories



Twin keeper



Metal cabinet



Individual cable tube

Certificates





HEX (120°)

3-motor desks

■ For product dimensions see page 162



For assembly videos and instructions

Scan me



View our range of table tops at page 67

Important product information & main specifications

Adjustable height range (mm)	: 625 - 1275
Adjustable range frame size (mm)	: 2*(925 - 1425)
Lifting capacity (kg)	: 150
Warranty period (years)	: 5
Available colours	: Aluminium : Black : White

■ For product specifications see page 157

Recommended accessories



Glory



TV lifting system



Solid

Certificates





LINK (180°)

3-motor desks

■ For product dimensions see page 162



For assembly videos and instructions

Scan me



View our range of table tops at page 67

Important product information & main specifications

Adjustable height range (mm)	: 625 - 1275
Adjustable range frame size (mm)	: 2000 - 3000
Lifting capacity (kg)	: 150
Warranty period (years)	: 5
Available colours	: Aluminium : Black : White

■ For product specifications see page 157

Recommended accessories



Glory



Scale



TV lifting system

Certificates





4-MOTOR DESKS

Solid

 PAGE 52 / 53



SOLID

4-motor desks

■ For product dimensions see page 162



For assembly videos and instructions

Scan me



View our range of table tops at page 67

Important product information & main specifications

Adjustable height range (mm)	: 605 - 1255
Adjustable range frame size (mm)	: 800 - 1360 : 1360 2100
Lifting capacity (kg)	: 220
Warranty period (years)	: 5
Available colours	: Aluminium : Black : White

Recommended accessories



Scale



Balance



TV lifting
system

■ For product specifications see page 157



MANUAL DESKS

Handle	=====	PAGE 56 / 57
Speed	=====	PAGE 58 / 59
Adapt	=====	PAGE 60 / 61



HANDLE

Manual desks

■ For product dimensions see page 162



For assembly videos and instructions

Scan me



View our range of table tops at page 67

Important product information & main specifications

Adjustable height range (mm)	: 680 - 1130
Adjustable range frame size (mm)	: 1150 - 1800
Lifting capacity (kg)	: 80
Warranty period (years)	: 5
Available colours	: Aluminium : Black : White
	: 27,5

Gross weight (kg)

■ For product specifications see page 157

Recommended accessories



Tiltable cable tray



Individual cable tube



Electrification starter kit

Certificates





SPEED

Manual desks

■ For product dimensions see page 162



For assembly videos and instructions

Scan me



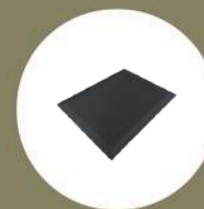
View our range of table tops at page 67

Important product information & main specifications

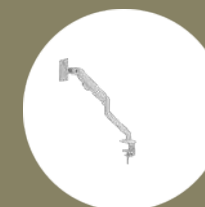
Adjustable height range (mm)	: 690 -1130
Adjustable range frame size (mm)	: 1150 -1800
Lifting capacity (kg)	: 80
Warranty period (years)	: 5
Available colours	: Aluminium : Black : White
Gross weight (kg)	: 29

■ For product specifications see page 157

Recommended accessories



Anti-fatigue
mat



Keeper



Personal
drawer

Certificates





ADAPT

Manual desks

■ For product dimensions see page 162



For assembly videos and instructions

Scan me



View our range of table tops at page 67

Important product information & main specifications

Adjustable height range (mm)	: 760 - 1110
Lifting capacity (kg)	: 30
Warranty period (years)	: 2
Available colours	: Black : White
Gross weight (kg)	: 22

■ For product specifications see page 157

Recommended accessories



Drive



Joy



Ergo ball

Certificates





SCREW DESKS

Fix (90°) ————— PAGE 64 / 65



FIX (90°)

Screw desks

■ For product dimensions see page 162



For assembly videos and instructions

Scan me



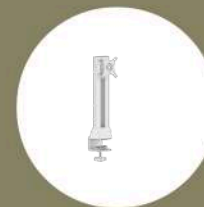
View our range of table tops at page 67

Important product information & main specifications

Adjustable height range (mm)	: 575 - 855
Adjustable range frame size (mm)	: 1075 - 1800
Lifting capacity (kg)	: 150
Warranty period (years)	: 5
Available colours	: Aluminium : Black : White
Gross weight (kg)	: 23,1

■ For product specifications see page 157

Recommended accessories



Manual single
monitor arm



Universal
CPU holder



Clamp power
socket

Certificates



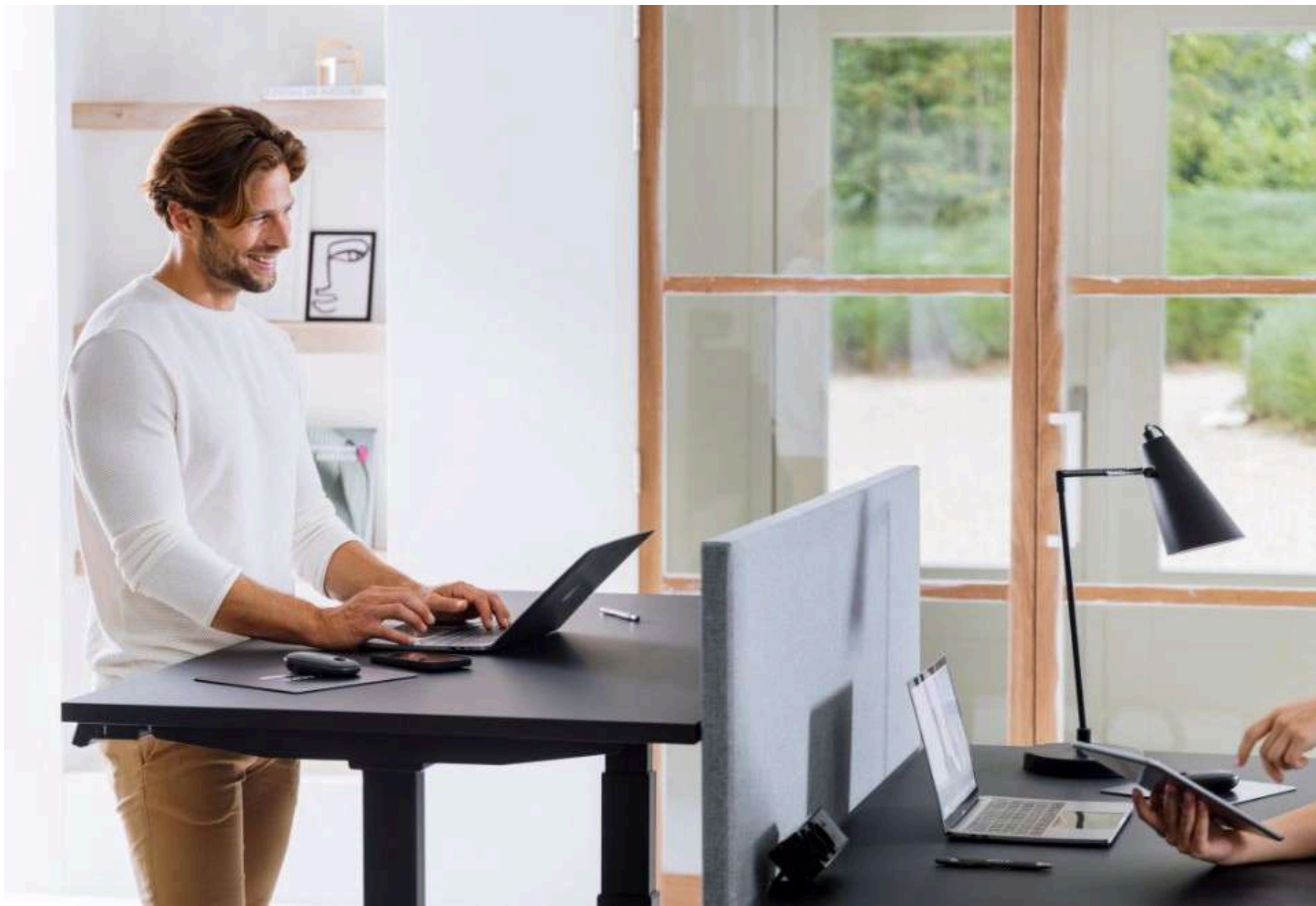


TABLE TOPS

Rectangular tabletop - Wood colours	—————	PAGE 68
Rectangular tabletop - Grey and White	—————	PAGE 68
Rectangular table top - Black - Perfect sense (MDF)	—————	PAGE 69
Table top packaging	—————	PAGE 69
Connecting plate set	—————	PAGE 70



Rectangular tabletop - Wood colours

Of course, a tabletop cannot be missing from a desk. Choose one of our high quality table tops to complete your desk, produced in the Netherlands, for a competitive price!

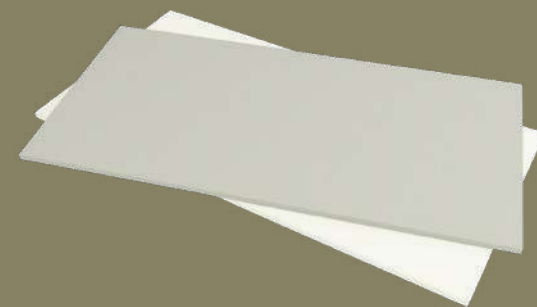
Colours



Rectangular tabletop - Grey and White

In the world of desks, a table top is the most important element that defines a workspace. Our classic white and grey table tops flawlessly integrate into any home office or home environment. Crafted with care and precision in the Netherlands!

Colours



Rectangular table top - Black - Perfect sense (MDF)



When it comes to a desk, nothing is more essential than a solid table top. Made with care and precision in the Netherlands, this premium table top brings a touch of magic to any work environment. In addition, this table top features anti-fingerprint...

Colours



Table top packaging

The transportation of tabletops frequently presents challenges, as they are prone to damage during shipping. To address this issue, we have created a specialized packaging solution that enables the safe shipment of tabletops through standard parc...





Connecting plate set



ACOUSTIC PANELS

Acoustic panel | Single desk — PAGE 73 / 74

Acoustic panel | Bench desk — PAGE 75 / 76



ACOUSTIC PANEL | SINGLE DESK

Acoustic panels

■ For product dimensions see page 162



View our range of table tops at page 67

Important product information & main specifications

Available colours	: Anthracite
	: Light grey
Acoustic panel sizes (cm)	:120 (L) x 75 (W) x 4 (H)
	:140 (L) x 75 (W) x 4 (H)
	:160 (L) x 75 (W) x 4 (H)
	:180 (L) x 75 (W) x 4 (H)

■ For product specifications see page 157



ACOUSTIC PANEL | BENCH DESK

Acoustic panels

■ For product dimensions see page 162



View our range of table tops at page 67

Important product information & main specifications

Available colours	: Anthracite
	: Light grey
Acoustic panel sizes (cm)	:120 (L) x 75 (W) x 4 (H)
	:140 (L) x 75 (W) x 4 (H)
	:160 (L) x 75 (W) x 4 (H)
	:180 (L) x 75 (W) x 4 (H)

■ For product specifications see page 157



ACOUSTIC PODS

Cottage POD — PAGE 79 / 80



COTTAGE POD

Acoustic pods

■ For product dimensions see page 162



For assembly videos and instructions

Scan me



Important product information & main specifications

Warranty period (years)	:5
Available colours	: Ash (Grey) : Olive (Olive green) : Sand (Beige)
Gross weight (kg)	: 264

■ For product specifications see page 157

Recommended accessories



Flow DUO



Flow



Electrification
starter kit

Certificates





CABLE MANAGEMENT

Metal cable tray	—————	PAGE 83
Tiltable cable tray	—————	PAGE 83
Individual cable tube	—————	PAGE 84
Bench cable tube	—————	PAGE 84
Bench connection beam	—————	PAGE 85
Cable port	—————	PAGE 85



Metal cable tray

Product dimensions

Length (mm)	: 800
Metal thickness (mm)	: 1,2
Warranty period (years)	: 5
Available colours	: Aluminium
	: Black
	: White

Tiltable cable tray

Length (mm)	: 1000
Metal thickness (mm)	: 1,2
Warranty period (years)	: 5
Available colours	: Aluminium
	: Black
	: White





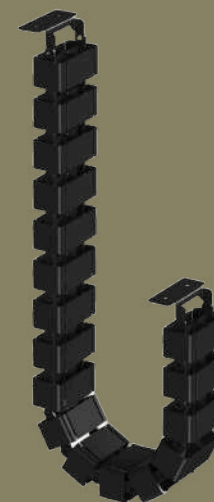
Individual cable tube

Product dimensions

Cable tube length (mm)	: 1325
Warranty period (years)	: 2
Available colours	: Aluminium : Black : White
Gross weight (kg)	: 2

Bench cable tube

Cable tube length (mm)	: 1320
Warranty period (years)	: 2
Available colours	: Aluminium : Black : White
Gross weight (kg)	: 1,3



Bench connection beam

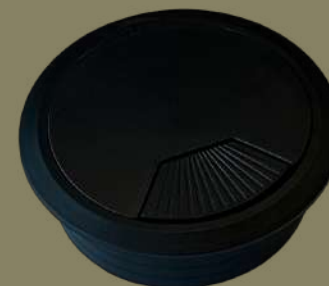
Product dimensions

Length (mm)	: 400
Metal thickness (mm)	: 2
Warranty period (years)	: 2
Available colours	: Aluminium : Black : White



Cable port

Available colours	: Aluminium : Black : White
-------------------	-----------------------------------





STORAGE

Personal drawer ————— PAGE 88

Metal cabinet ————— PAGE 88



Personal drawer

Product dimensions

Fixation : Universal underneath table top

Warranty period (years) : 2

Available colours : Aluminium

: Black

: White

Gross weight (kg) : 3,9

Metal cabinet

Number of drawers : 3

Including : Pen tray & lock with 2 keys

Warranty period (years) : 2

Available colours : Aluminium

: Black

: White





POWER SOCKETS & CHARGERS

Charge - Wireless charger	PAGE 91
Watt power outlet	PAGE 91
Clamp power socket	PAGE 92
Round power socket	PAGE 92
Pull power socket	PAGE 93
Multi power socket	PAGE 93
Connect-safe power socket (5 plugs)	PAGE 94
Connect-safe power socket (3 plugs)	PAGE 94
Electrification starter kit	PAGE 95
Connect-safe - Base cable EU - 2 meter	PAGE 95
Connect-safe - Extension cable - 2 meter	PAGE 96
Connect-safe 3-way connector	PAGE 96



Charge - Wireless charger

Easily charge your smartphone with our sleek and minimalistic wireless charger, designed to mount directly into your desk with our drilling service. Enjoy effortless cable free charging at your workspace, including a 2-year warranty period.

Product dimensions

Max wireless output (W)	: 15
Diameter (mm)	: 60
Warranty period (years)	: 2
Available colours	: Aluminium : Black

Watt power outlet

Configuration	: 2 x EU plug, 1 x USB-A, 1 x USB-C
Warranty period (years)	: 2
Available colours	: Black
Gross weight (kg)	: 0,9



Clamp power socket



Easily install this power socket on your desk using the universal clamp. It provides 2 EU plugs, 1 USB-A, and 1 USB-C port, ensuring all your devices stay powered. Comes with a 5-year warranty.

Product dimensions

Maximum current (A)	: 16
Maximum voltage (V)	: 250
Maximum output (W)	: 4000
Configuration	: 2 x EU plug, 1 x USB-A, 1 x USB-C

Round power socket

Compact and efficient, this round socket fits into your desk via a hole and provides 1 EU plug, 1 USB-A, and 1 USB-C port for essential device charging. Comes with a 5-year warranty.

Maximum current (A)	: 16
Maximum voltage (V)	: 250
Maximum output (W)	: 4000
Configuration	: 1 x EU plug, 1 x USB-A, 1 x USB-C



Pull power socket

Designed to seamlessly integrate into your desk, this pull-out power socket stays hidden until you need it. It features 3 EU plugs, 1 USB-A, and 1 USB-C port, with a 5-year warranty.

Product dimensions

Maximum current (A)	: 16
Maximum voltage (V)	: 250
Maximum output (W)	: 4000
Configuration	: 3x EU plug, 1 x USB-A, 1 x USB-C



Multi power socket

This socket can be hidden within your desk via a hole and pops up when needed. It offers 3 EU plugs, 1 USB-A, 1 USB-C, and a wireless charger for added functionality.

Maximum current (A)

Maximum voltage (V)

Maximum output (W)



Connect-safe power socket (5 plugs)

Securely screw this power socket onto your desk and enjoy access to 5 EU plugs for all your electronics. Built for convenience and durability, it comes with a 5-year warranty.

Product dimensions

Maximum current (A)	: 16
Maximum voltage (V)	: 250
Maximum output (W)	: 4000
Configuration	: 5 x EU plug



Connect-safe power socket

Securely screw this power socket onto your desk and enjoy access to 3 EU plugs for all your electronics. Built for convenience and durability, it comes with a 5-year warranty.

Maximum current (A)	: 16
Maximum voltage (V)	: 250
Maximum output (W)	: 4000
Configuration	: 3 x EU plug





Electrification starter kit

The electrification kit combines the versatile "Connect-safe power socket", the compact "Round power socket", and a base cable for a setup designed to power all your devices.

Product dimensions

Configuration	: 4x EU plug, 1 x USB-A, 1 x USB-C
Warranty period (years)	: 5
Available colours	: Black
Gross weight (kg)	: 1,88

Connect-safe - Base cable EU - 2 meter

Maximum current (A)	: 16
Maximum voltage (V)	: 250
Maximum output (W)	: 4000
Warranty period (years)	: 2





Connect-safe - Extension cable - 2 meter

Product dimensions

Maximum current (A)	: 16
Maximum voltage (V)	: 250
Maximum output (W)	: 4000
Warranty period (years)	: 2

Connect-safe 3-way connector

Easily expand your power setup with the 3-way connector. Designed to split one eGST cable into two separate connections, this compact solution is ideal for office environments, and in particular for bench desks that require electricity on both sides.

Maximum current (A)	: 16
Maximum voltage (V)	: 450
Configuration	: 3 connection points
Warranty period (years)	: 5





HOLDERS&MONITOR ARMS

TV lifting system	PAGE 99
Universal CPU holder	PAGE 99
Keeper	PAGE 100
Twin keeper	PAGE 100
Manual single monitor arm	PAGE 101
Monitor arm bracket	PAGE 101

TV lifting system

A stable base with lifting columns makes this system ideal for presentations, events, or flexible setups. The mounted TV can be raised or lowered smoothly, while the mobile frame allows it to be moved easily from room to room.

Product dimensions

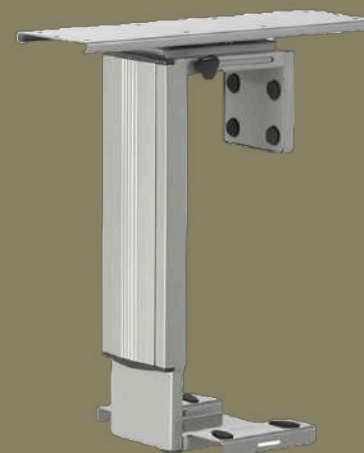
Adjustable height range (mm)	: 860 - 1810
Adjustable range frame size (mm)	: 400 - 800
Lifting capacity (kg)	: 60
Warranty period (years)	: 5



Universal CPU holder

By using the CPU holder you can mount your computer on your desk in a neat and universal way.

Height adjustability (mm)	: 300 - 455
Width adjustability (mm)	: 135 - 245
Warranty period (years)	: 2
Available colours	: Aluminium : Black : White



Keeper | SKU: AK-ZD100



The "Keeper" is our new and improved single monitor arm, featuring gas spring adjustability for effortless height, and angle adjustments. This model offers the same smooth performance as its predecessor, while being even more competitive in price.

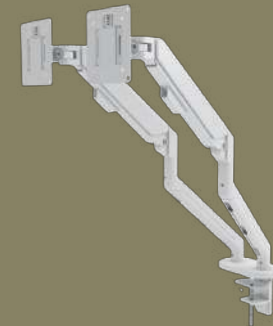
Product dimensions

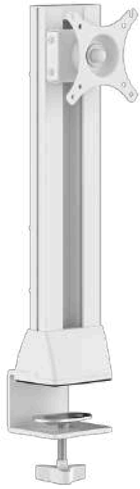
Suitable monitor size (inch)	: 13 - 36
Rotating angle	: 360°
Height range (mm)	: 148 - 445 mm
Weight capacity (Kg)	: 2 - 12

Twin keeper | SKU: AK-ZD200

The "Twin keeper" is our new and improved dual monitor arm, featuring gas spring adjustability for effortless height, and angle adjustments. This model offers the same smooth performance as its predecessor, while being even more competitive in price.

Suitable monitor size (inch)	: 13 - 36
Rotating angle	: 360°
Height range (mm)	: 148 - 445
Weight capacity (Kg)	: 2 - 12 (per arm)





Manual single monitor arm

This handy monitor arm allows one or, if extended with a bracket, two VESA monitors to be easily adjusted to the right height for the user.

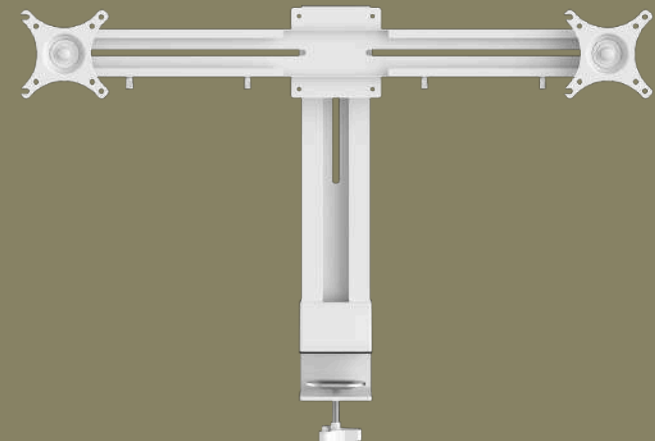
Product dimensions

Suitable monitor size (inch)	: max. 32"
Rotating angle	: 360°
Height range (mm)	: 180
Weight capacity (Kg)	: max. 15

Monitor arm bracket

By using this handy bracket extension 2 VESA monitors can be attached to the single manual monitor arm. In addition, this product is very quick and easy to mount.

Suitable monitor size (inch)	: max. 27"
Height range (mm)	: 180
Weight capacity (Kg)	: max. 15
Warranty period (years)	: 2





EXECUTIVE DESKS

Executive desk

 PAGE 104 / 105



EXECUTIVE DESK

Executive desks

■ For product dimensions see page 162



For assembly videos and instructions

Scan me



View our range of table tops at page 67

Important product information & main specifications

Adjustable height range (mm)	: 700 - 1275
Adjustable range frame size (mm)	: 1225 - 1950
Lifting capacity (kg)	: 120 5
Warranty period (years)	:
Available colours	: Anthracite
Gross weight (kg)	: 149,8

■ For product specifications see page 157

Recommended accessories



Superior



Executive
cabinets



Coffee table

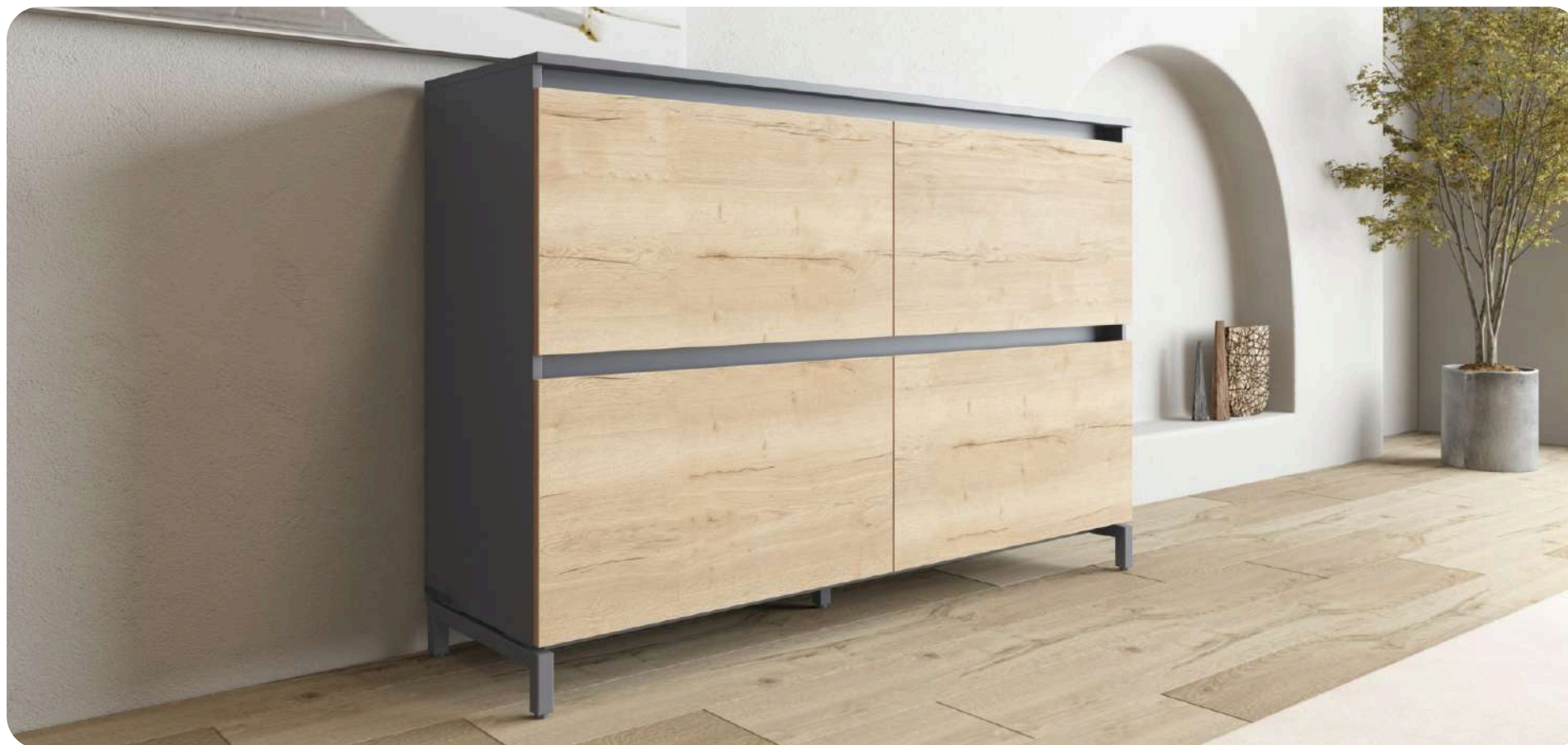
Certificates





EXECUTIVE CABINETS

Executive cabinets — PAGE 108 / 109



EXECUTIVE CABINETS

Executive cabinets

■ For product dimensions see page 162



For assembly videos and instructions

Scan me



View our range of table tops at page 67

Important product information & main specifications

Warranty period (years)	: 5
Available colours	: Anthracite
Wood colour	: Nature OAK

■ For product specifications see page 157

Recommended accessories



Superior



Executive desk



Coffee table

Certificates





EXECUTIVE TABLES

Coffee table

 PAGE 112 / 113



COFFEE TABLE

Executive tables

■ For product dimensions see page 162



For assembly videos and instructions

Scan me



View our range of table tops at page 67

Important product information & main specifications

Warranty period (years)	: 5
Available colours	: Anthracite
Wood colour	: Nature OAK
Gross weight (kg)	: 22,45

■ For product specifications see page 157

Recommended accessories



Superior



Executive desk



Executive cabinets

Certificates





DESK RISERS

Enhance _____ PAGE 116 / 117
Advance _____ PAGE 118 / 119



ENHANCE

Desk risers

■ For product dimensions see page 162



For assembly videos and instructions

Scan me



View our range of table tops at page 67

Important product information & main specifications

Type of desk riser	: Pneumatic
Adjustable height range (mm)	: 55 - 408
Lifting capacity (kg)	: 8
Warranty period (years)	: 5
Available colours	: Black
Gross weight (kg)	: 13

■ For product specifications see page 157

Recommended accessories



Watt power outlet



Vane



Metal cabinet

Certificates





ADVANCE

Desk risers

■ For product dimensions see page 162



For assembly videos and instructions

Scan me



View our range of table tops at page 67

Important product information & main specifications

Type of desk riser	: Electric
Adjustable height range (mm)	: 150 - 500
Lifting capacity (kg)	: 20
Warranty period (years)	: 5
Available colours	: Black
Gross weight (kg)	: 28,6

■ For product specifications see page 157

Recommended accessories



Air



Balance



Metal cabinet

Certificates





LEG COVERS

Joy cover	=====	PAGE 122 / 123
Move & Flow cover	=====	PAGE 124 / 125
DUO cover	=====	PAGE 126 / 127



JOY COVER

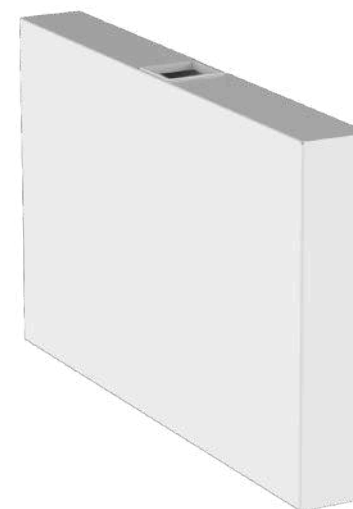
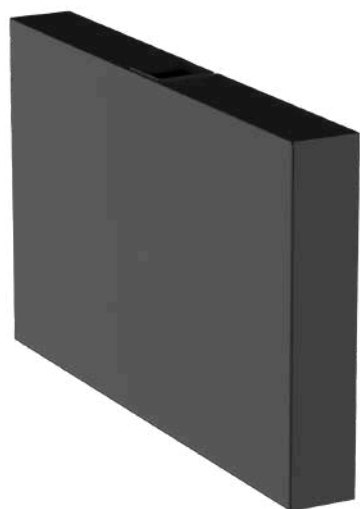
Leg covers

■ For product dimensions see page 162



For assembly videos and instructions

Scan me



View our range of table tops at page 67

Important product information & main specifications

Cover length (mm)	: 800
Fixation	: Magnets
Warranty period (years)	: 2
Available colours	: Aluminium
	: Black
	: White
Gross weight (kg)	: 13,3
Metal thickness (mm)	: 1,2

■ For product specifications see page 157

Recommended accessories



Joy



Universal CPU
holder



Individual
cable tube



MOVE & FLOW COVER

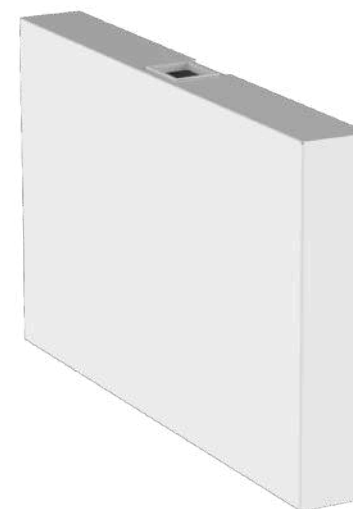
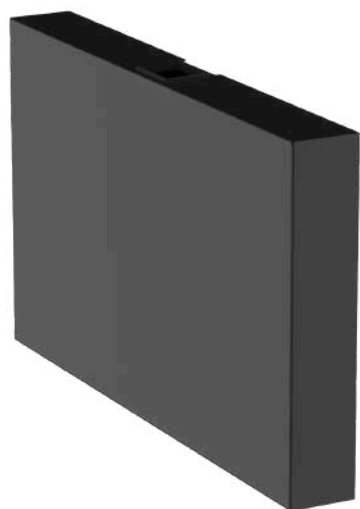
Leg covers

■ For product dimensions see page 162



For assembly videos and instructions

Scan me



View our range of table tops at page 67

Important product information & main specifications

Cover length (mm)	:	800
Fixation	:	Magnets
Warranty period (years)	:	2
Available colours	:	Aluminium
	:	Black
	:	White
Gross weight (kg)	:	13,3
Metal thickness (mm)	:	1,2

■ For product specifications see page 157

Recommended accessories



Flow



Move



Tiltable cable tray



DUO COVER

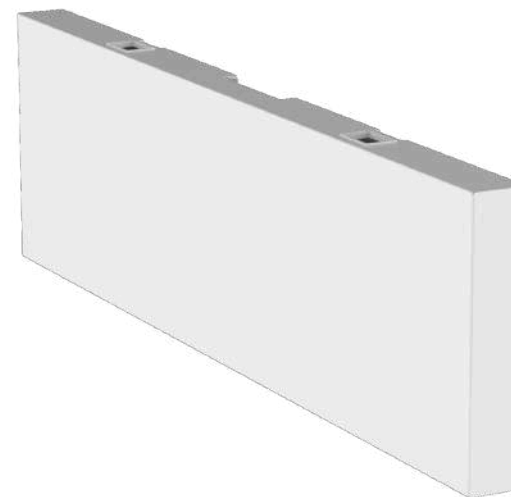
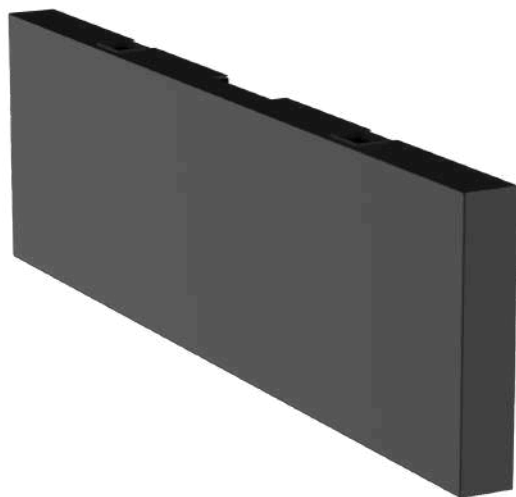
Leg covers

■ For product dimensions see page 162



For assembly videos and instructions

Scan me



View our range of table tops at page 67

Important product information & main specifications

Cover length (mm)	: 1660
Fixation	: Magnets
Warranty period (years)	: 2
Available colours	: Aluminium
	: Black
	: White
Gross weight (kg)	: 23
Metal thickness (mm)	: 1,2

■ For product specifications see page 157

Recommended accessories



Handle DUO



Flow DUO



Move DUO



OPERATIONAL SEATING

Air	PAGE 130
Glory	PAGE 131
Rapthor	PAGE 132
Sphere	PAGE 133
Superior	PAGE 134
Valor	PAGE 135
Vane	PAGE 136
Profi	PAGE 137
Glide	PAGE 138

Air



Product dimensions

Seat height (mm)	: 460 - 552
Seat width (mm)	: 507
Upholstery	: 100,000 Martindale
Armrest	: 3D armrest with softpad
Seat depth (mm)	: 465
Weight capacity (Kg)	: 120
Wheels chair	: Multifunctional wheels 60 mm
Available colours	: Black
Warranty period (years)	: 5
Gross weight (kg)	: 19,9



For assembly videos and instructions

Scan me

Glory



Product dimensions

Seat height (mm)	: 455 -547
Seat width (mm)	: 500
Seat depth (mm)	: 440 - 490
Weight capacity (Kg)	: 150
Armrest	: 4D adjustable armrests
Upholstery	: 80,000+ Martindale
Wheels chair	: Multifunctional wheels 60 mm
Warranty period (years)	: 5



For assembly videos and instructions

Scan me

Rapthor



Product dimensions

Seat height (mm)	: 500 - 600
Seat width (mm)	: 540
Seat depth (mm)	: 490
Weight capacity (Kg)	: 200
Wheels chair	: Multifunctional wheels 60 mm
Warranty period (years)	: 5
Available colours	: Black
Gross weight (kg)	: 32



For assembly videos and instructions

Scan me

Sphere



Product dimensions

Seat height (mm)	: 460 - 540
Seat width (mm)	: 500
Seat depth (mm)	: 460 - 510
Weight capacity (Kg)	: 136
Armrest	: Armrest with armpads
Upholstery	: Imitation cashmere fabric
Wheels chair	: Multifunctional wheels 60 mm
Warranty period (years)	: 5
Available colours	: Grey
Gross weight (kg)	: 17



For assembly videos and instructions

Scan me

Superior



Product dimensions

Seat height (mm)	: 451 - 560
Seat width (mm)	: 470
Seat depth (mm)	: 453 - 500
Weight capacity (Kg)	: 136
Upholstery	: Leather
Wheels chair	: Multifunctional wheels 60 mm
Warranty period (years)	: 5
Available colours	: Black
Gross weight (kg)	: 19,7



For assembly videos and instructions

Scan me

Valor



Product dimensions

Seat height (mm)	: 490 - 590
Seat width (mm)	: 520
Seat depth (mm)	: 520 - 590
Weight capacity (Kg)	: 120
Armrest	: 4D adjustable
Upholstery	: 100,000 Martindale
Wheels chair	: Multifunctional wheels 60 mm
Warranty period (years)	: 5
Available colours	: Black
Gross weight (kg)	: 21



For assembly videos and instructions

Scan me

Vane



Product dimensions

Seat height (mm)	: 450 - 550
Seat width (mm)	: 500
Upholstery	: 100,000 Martindale
Armrest	: 3D adjustable with PU upholstery
Seat depth (mm)	: 450 - 490
Weight capacity (Kg)	: 150
Wheels chair	: Multifunctional wheels 60 mm
Available colours	: Black
Warranty period (years)	: 5
Gross weight (kg)	: 22



For assembly videos and instructions

Scan me

Profi



Product dimensions

Seat height (mm)	: 445 - 565
Seat width (mm)	: 465
Upholstery	: 130,000 Martindale
Armrest	: 3D adjustable with PU upholstery
Seat depth (mm)	: 425 - 485
Weight capacity (Kg)	: 120
Wheels chair	: Multifunctional wheels 60 mm
Available colours	: Black
Warranty period (years)	: 5
Gross weight (kg)	: 24



For assembly videos and instructions

Scan me

Glide



Product dimensions

Seat height (mm)	: 455 - 570
Seat width (mm)	: 490
Upholstery	: 120,000 Martindale
Armrest	: 3D adjustable with softpad
Weight capacity (Kg)	: 120
Wheels chair	: Multifunctional wheels 60 mm
Available colours	: Black
Warranty period (years)	: 5
Gross weight (kg)	: 23



For assembly videos and instructions

Scan me



ERGONOMIC SEATING

Balance	—————	PAGE 141
Ergo ball	—————	PAGE 142
Anti-fatigue mat	—————	PAGE 143

Balance



Product dimensions

Seat height (mm)	: 580 - 830
Seat width (mm)	: 330
Available colours	: Black
Warranty period (years)	: 5
Gross weight (kg)	: 10



For assembly videos and instructions

Scan me

Ergo ball



Product dimensions

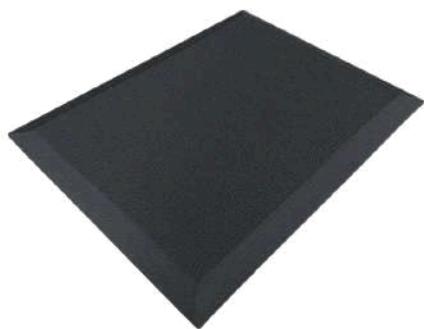
Material	: PVC
Material cover	: Mix of cotton and linnen
Including	: Handgrip and cover
Size	: 65 cm (Ø)
Available colours	: Black
Warranty period (years)	: 2
Gross weight (kg)	: 0,7



For assembly videos and instructions

Scan me

Anti-fatigue mat



Product dimensions

Material	: TPE
Available colours	: Black
Warranty period (years)	: 2
Gross weight (kg)	: 1,5



CONFERENCE SEATING

Scale	—————	PAGE 146
Swing	—————	PAGE 147
Slide	—————	PAGE 148
Sledge	—————	PAGE 149
Confi	—————	PAGE 150

Scale

Introducing our latest conference chair, the "Scale". Crafted with precision and care, this chair combines a fresh design with surprising comfort, making it the perfect seating solution for your professional gatherings. In addition, it comes with a 2 year warranty period due to high quality of the materials and the durability of the chair.



Product dimensions

Warranty period (years)	: 2
Upholstery	: 70,000 Martindale
Seat height (mm)	: 440
Seat width (mm)	: 500
Seat depth (mm)	: 450
Weight capacity (Kg)	: 120
Material cover	: Polyester
Gross weight (kg)	: 9



For assembly videos and instructions

Scan me

Swing



Product dimensions

Seat height (mm)	: 445 - 565
Seat width (mm)	: 495 : 450
Seat depth (mm)	: 150 :
Weight capacity (Kg)	Grey :
Available colours	Dark blue :
	5 : 10,5

Warranty period (years)

Gross weight (kg)



For assembly videos and instructions

Scan me

Slide



Product dimensions

Seat height (mm)	: 465 : 465 : 130,000
Seat width (mm)	Martindale : Armrest
Upholstery	with softpads : 425 :
Armrest	120 : Black : 5 : 25,6
Seat depth (mm)	
Weight capacity (Kg)	
Available colours	
Warranty period (years)	
Gross weight (kg)	



For assembly videos and instructions

Scan me

Sledge



Product dimensions

Seat height (mm)	: 440
Seat width (mm)	: 495
Upholstery	: 120,000 Martindale
Armrest	: Armrest with armpads
Seat depth (mm)	: 440
Weight capacity (Kg)	: 120
Available colours	: Black :
Warranty period (years)	5
Gross weight (kg)	: 28



For assembly videos and instructions

Scan me

Confi



Product dimensions

Seat height (mm)	: 430
Seat width (mm)	: 495
Upholstery	: 120,000 Martindale
Armrest	: Armrest with armpads
Seat depth (mm)	: 350
Weight capacity (Kg)	: 120
Available colours	: Black
Warranty period (years)	: 5
Gross weight (kg)	: 23,6



For assembly videos and instructions

Scan me



PRODUCT SPECIFICATIONS

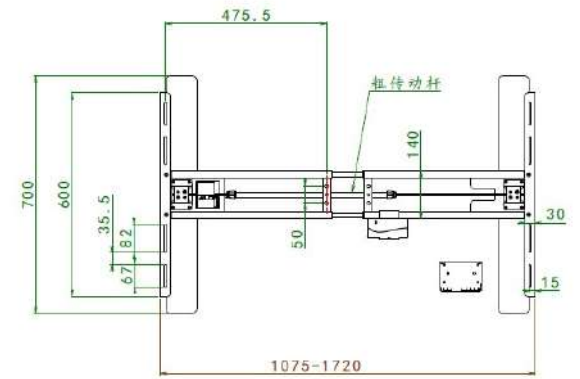
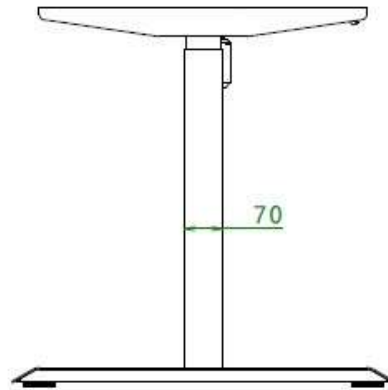
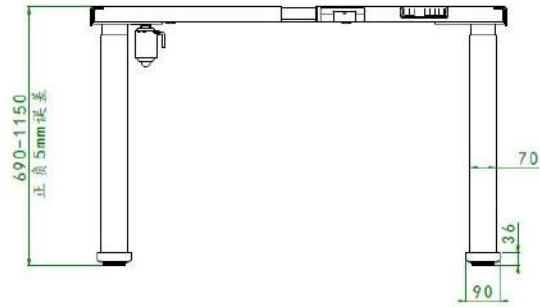
PRODUCTS	1-motor desks		2-motor desks				
	Drive	Home	Little	Wing set	Ring	Flow	Joy
Product information							
Leg orientation	Square 690 - 1150 1075	Square	Square 690 - 1150 700 -	Rectangular	Round	Rectangular	Square
Adjustable height range (mm)	- 1720 600 700 100 25	710 - 1190	1100 500 600 120 40		625 - 1275	625 - 1275	625 - 1275
Adjustable range frame size (mm)	<50 110 - 230v 5 No		<40 110 - 230v 5 No		1075 - 1800	1075 - 1800	1075 - 1800
Table top brackets lengths (mm)	Aoke Integrated		Aoke Integrated	900	600	600	600
Foot length (mm)	Aluminium/Black/White	600 60 40	Aluminium/Black/White		700	700	700
Lifting capacity (kg)	Integrated	<45 110 -	Integrated		120	120	120
Max. speed (mm/s)		230v 2 No			40	40	40
Noise level (dB.)		Aoke			<45	<45	<45
Electricity input		Gyroscope			110 - 230v	110 - 230v	110 - 230v
Warranty period (years)		Black/White		5	5	5	5
Bluetooth		Integrated			Yes	Yes	Yes
Motor					Aoke	Aoke	Aoke
Anti-collision type					Integrated	Integrated	Integrated
Available colours				Aluminium/Black/White	Aluminium/Black/White	Aluminium/Black/White	Aluminium/Black/White
Control box					Integrated	Integrated	Integrated
Packing Information							
Dimensions in cm.							
Length in cm	120	2 boxes - sizes on page 151	92,5	132	104,5	104,5	104,5
Width in cm	29,5		29,5	30	31	29	29
Height in cm	22		19,5	13,5	19	19	19
Net weight in Kg	25,5	38,1	23	8	30	26,8	29,2
Quantity per pallet	30		44	48	44	44	44
Gross weight (kg)	28	42,8	24,5	9	32	29,1	30,8

PRODUCTS	2-motor desks		3-motor desks			4-motor desks	Bench desks
	Move	Ypsilon	Twist (90°)	Hex (120°)	Link (180°)	Solid	Handle DUO
Product information							
Leg orientation	Rectangular		Square	Square	Square	Square	Rectangular
Adjustable height range (mm)	625 - 1275	710 - 1170	625 - 1275	625 - 1275	625 - 1275	605 - 1255	680 - 1130
Adjustable range frame size (mm)	1075 - 1800	1075 - 1790	1075 - 1800	2*(925 - 1425)	2000 - 3000	800 - 1360/1360 - 2100	1150 - 1800
Table top brackets lengths (mm)	600	600	2*600 + 1*500	600	900	700/900/1100	600
Foot length (mm)	700	715	2*700 + 1*500	2*700 + 1*400	900		90
Lifting capacity (kg)	120	120	150	150	150	220	80 per side
Max. speed (mm/s)	40	40	40	40	40	38	8/turn
Noise level (dB.)	<45	50	<50	<50	<50	<50	
Electricity input	110 - 230v	110 - 230v	110 - 230v	110 - 230v	110 - 230v	110 - 230v	
Warranty period (years)	5	5	5	5	5	5	5
Bluetooth	No	Yes	Yes	Yes	Yes		
Motor	Aoke	Aoke	Aoke	Aoke	Aoke	Aoke	
Anti-collision type	Integrated	Integrated	Integrated	Integrated	Integrated	Integrated	
Available colours	Aluminium/Black/White	Aluminium/Black/White	Aluminium/Black/White	Aluminium/Black/White	Aluminium/Black/White	Aluminium/Black/White	Aluminium/Black/White
Control box	Integrated	Integrated	Integrated	Integrated	Integrated	WP-CB41A	
Packing Information							
Dimensions in cm.							
Length in cm	104,5	2 boxes - sizes on page 151	2 boxes - sizes on page 151				3 boxes - sizes on page 151
Width in cm	29						
Height in cm	19,5						
Net weight in Kg	31	34	45,4				59
Quantity per pallet	44						
Gross weight (kg)	31,5	38,5	49,1				56,3

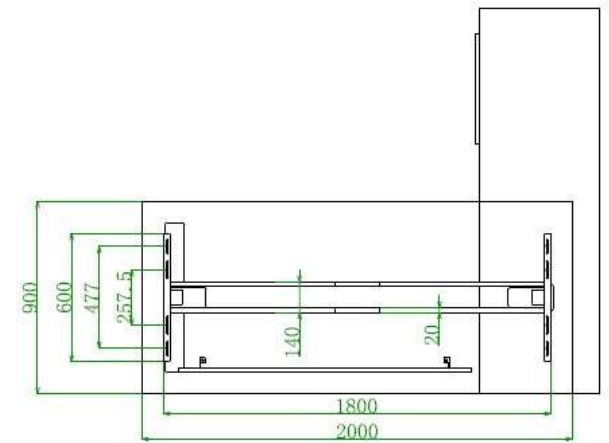
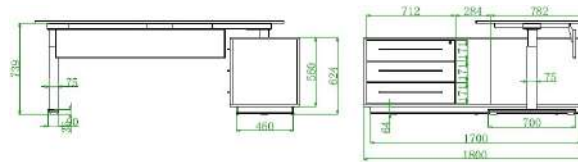
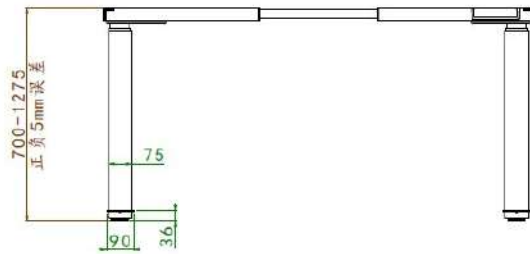
PRODUCTS	Manual desks					Screw desks
		Move DUO	Handle	Adapt	Speed	Fix (90°)
Product information						
Leg orientation	Rectangular	Rectangular	Rectangular	Rectangular	Square 690	
Adjustable height range (mm)	625 - 1275	625 - 1275	680 - 1130	760 - 1110	-1130 1150	575 - 855
Adjustable range frame size (mm)	1075 - 1800	1075 - 1800	1150 - 1800		-1800 600	1075 - 1800
Table top brackets lengths (mm)	600	600	600 700 80		700 80	600 700
Foot length (mm)	80	90	8/turn	775	18/turn <45	150 Manual
Lifting capacity (kg)	120 per side	120 per side		30		
Max. speed (mm/s)	40	40		/		
Noise level (dB.)	<45	<45				
Electricity input	110 - 230v	110 - 230v				
Warranty period (years)	5	5	5	2	5	5
Bluetooth	Yes	No				
Motor	Aoke	Aoke				
Anti-collision type	Integrated	Integrated				
Available colours	Aluminium/Black/White	Aluminium/Black/White	Aluminium/Black/White	Black/White	Aluminium/Black/White	Aluminium/Black/White
Control box	Integrated	Integrated				
Packing Information						
Dimensions in cm.						
Length in cm						
Width in cm	4 boxes - sizes on page 151	5 boxes - sizes on page 151	113,5	86,5	104,5	112
Height in cm			32 20	54	30,5	19,5
Net weight in Kg			26 44	18	20,5	23
Quantity per pallet	64,7	72,8	27,5	17,5	26,2	21,1
Gross weight (kg)				24	40 29	45
	72	80,2		22		23,1



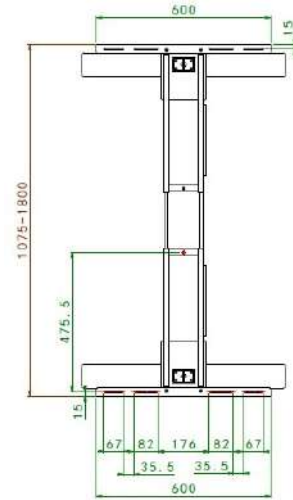
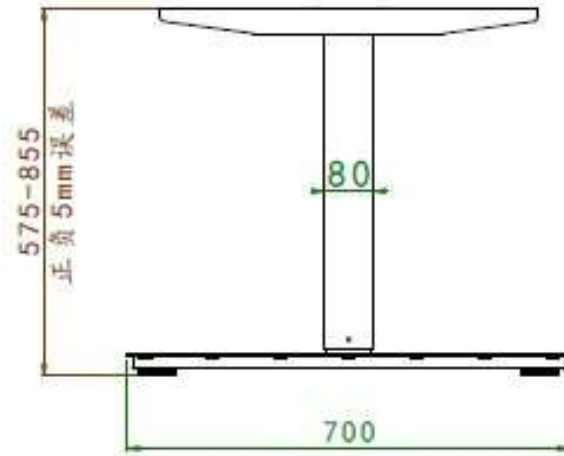
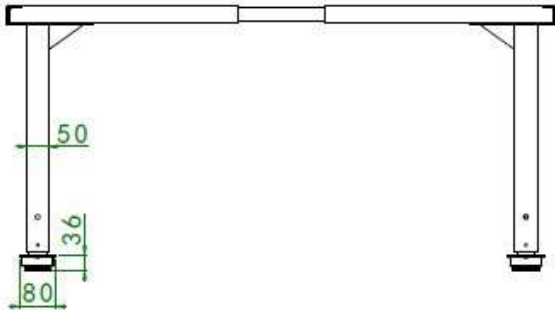
Drive



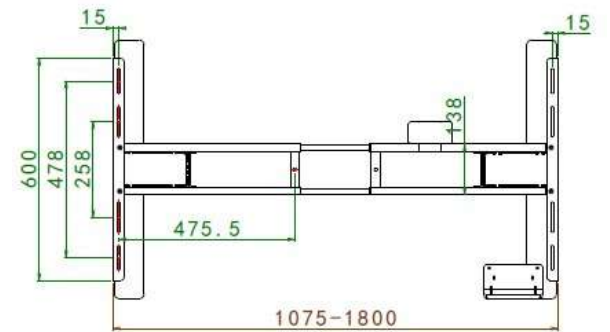
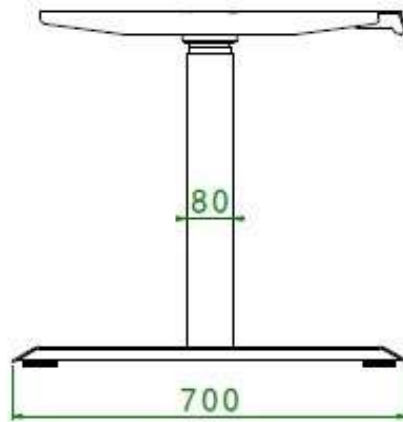
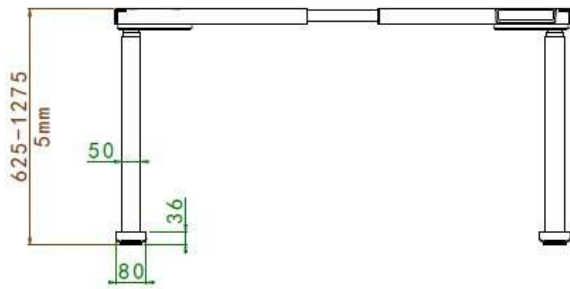
Executive desk



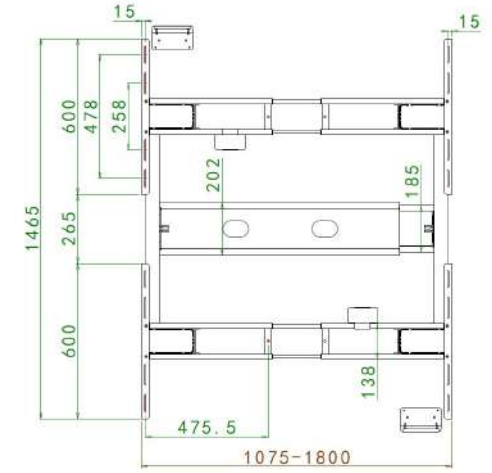
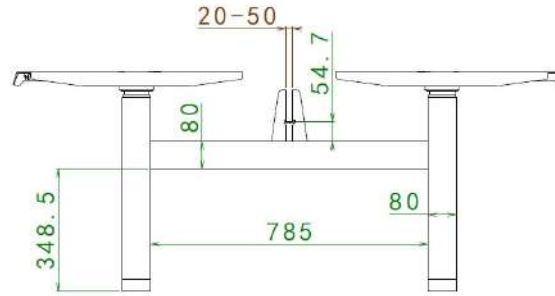
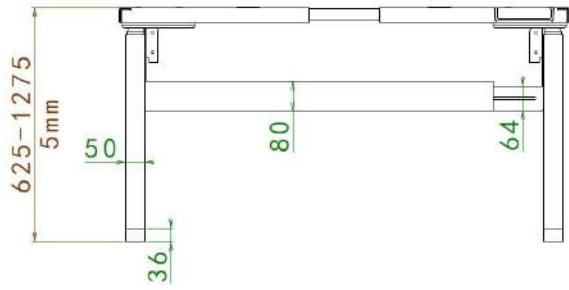
Fix (90°)



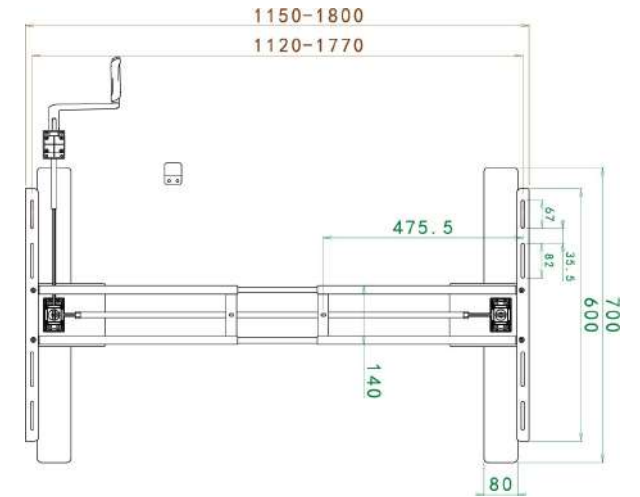
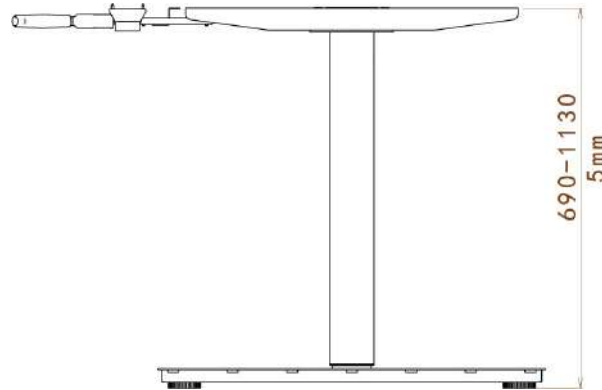
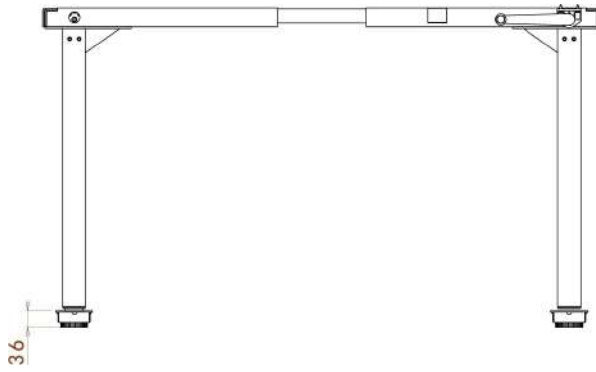
Flow



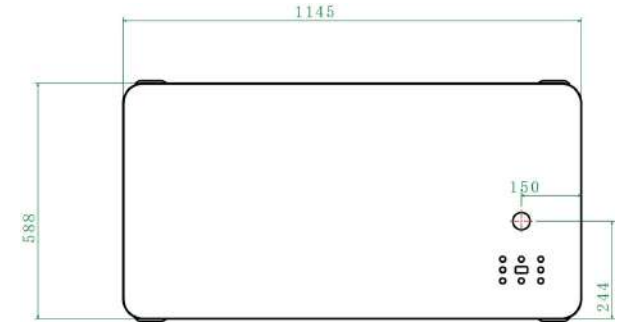
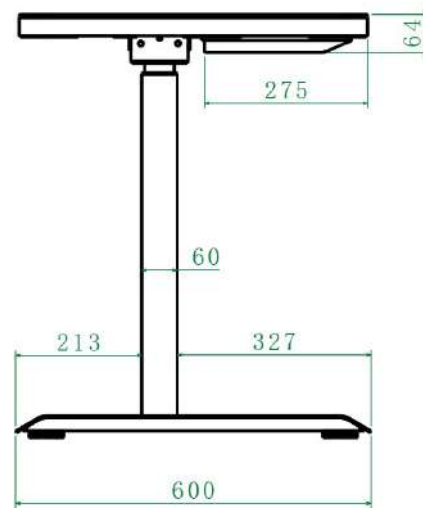
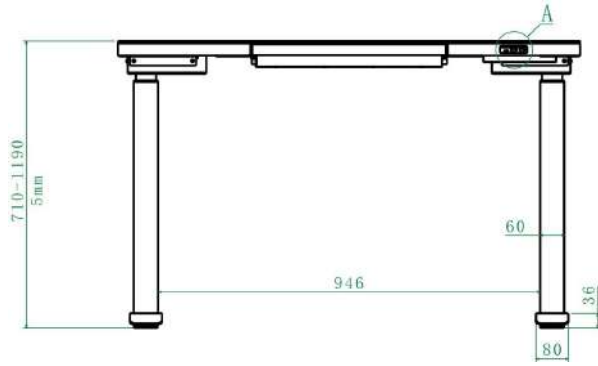
Flow DUO



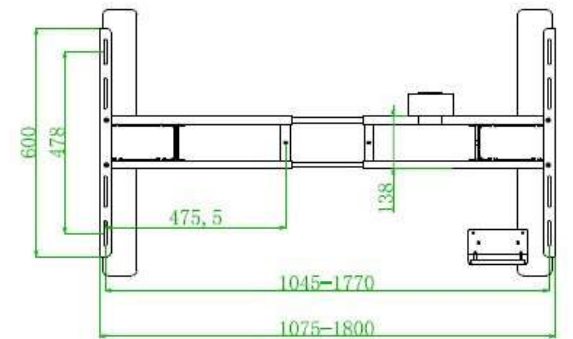
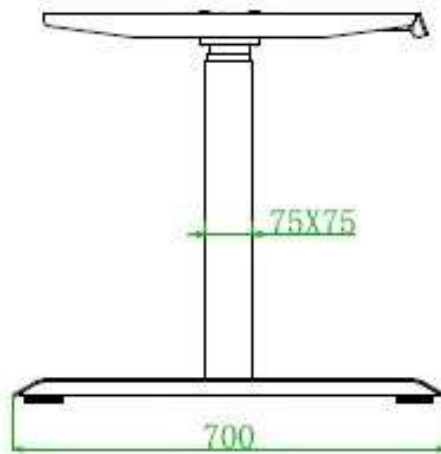
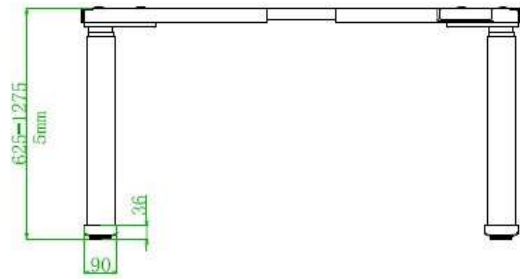
Handle



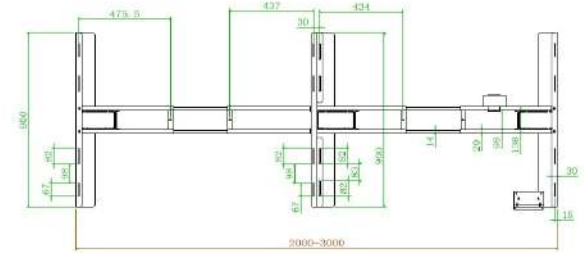
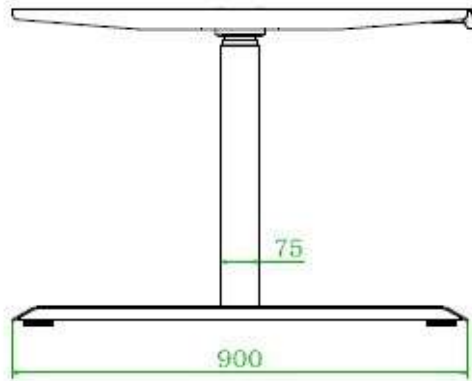
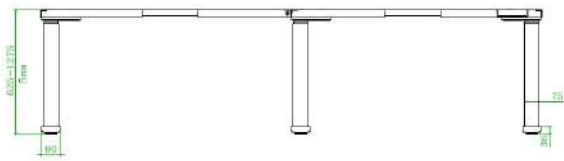
Home



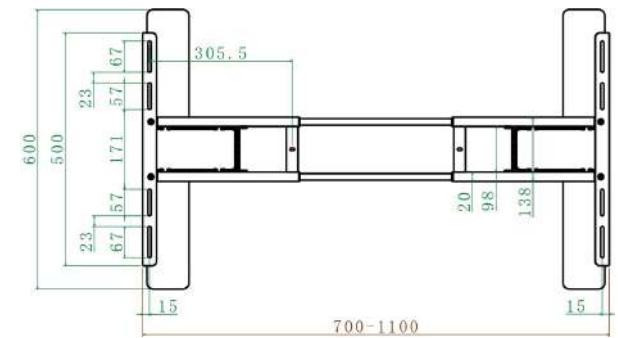
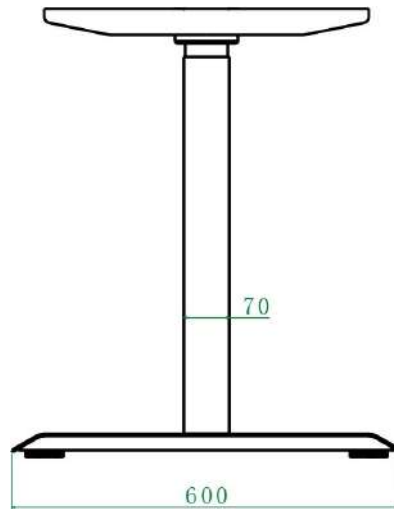
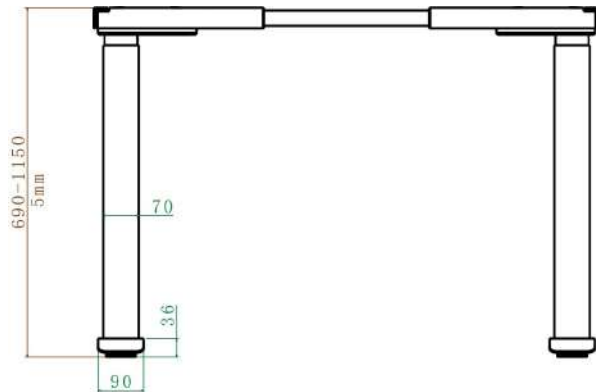
Joy



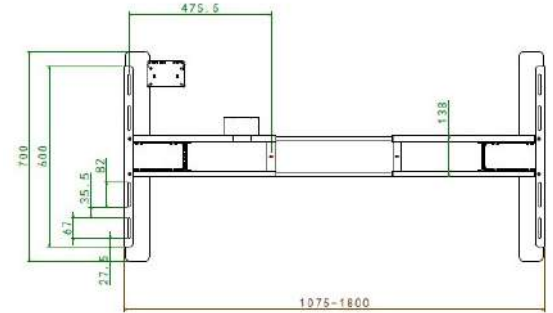
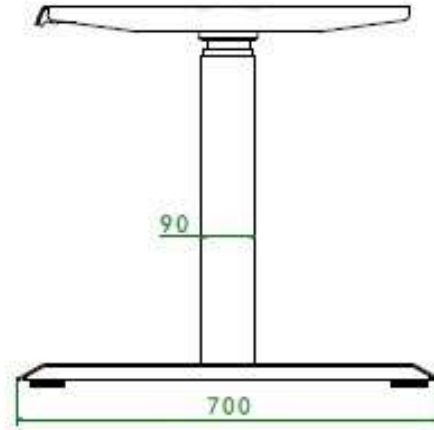
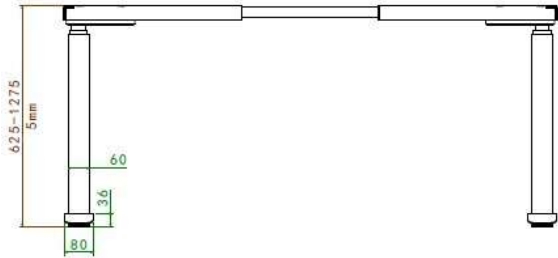
Link (180°)



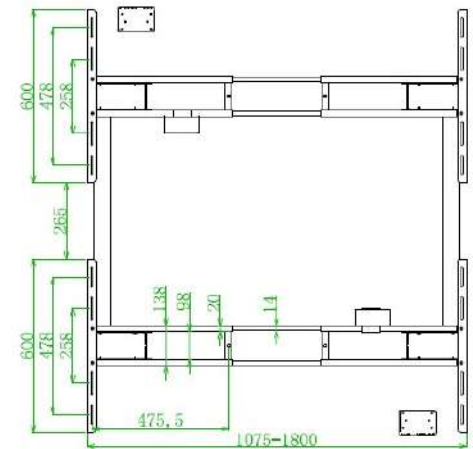
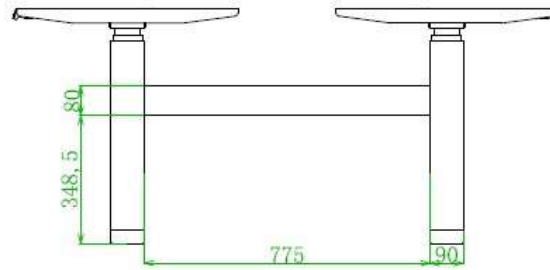
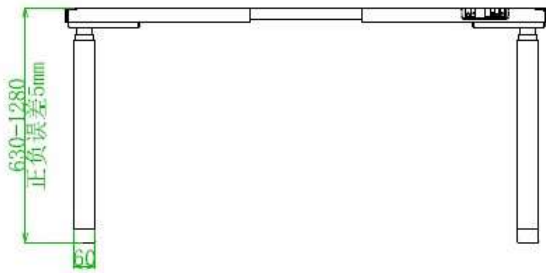
Little



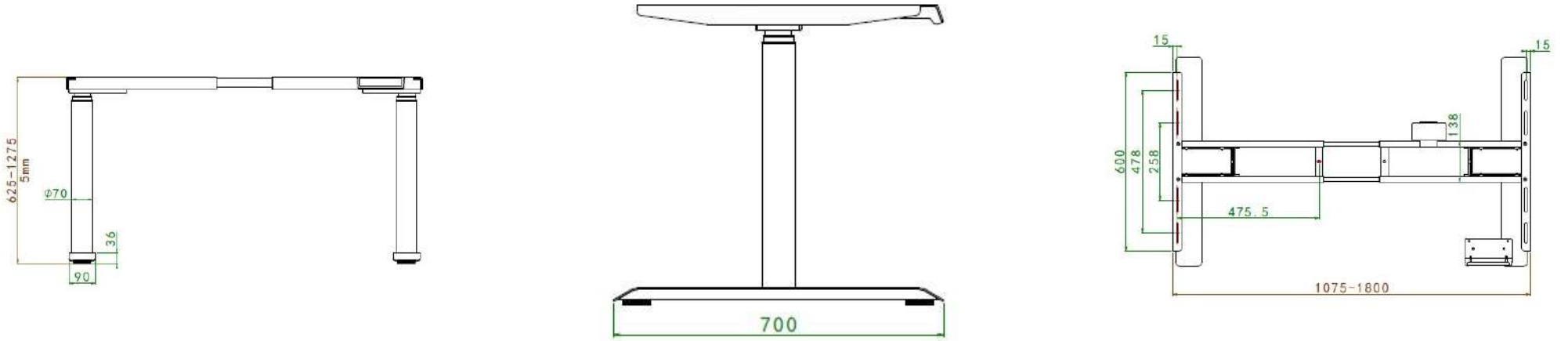
Move



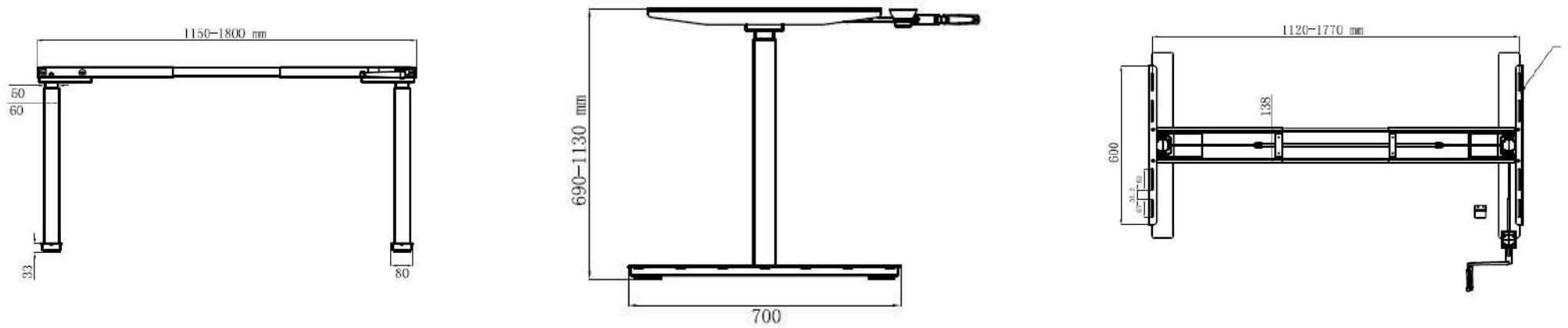
Move DUO



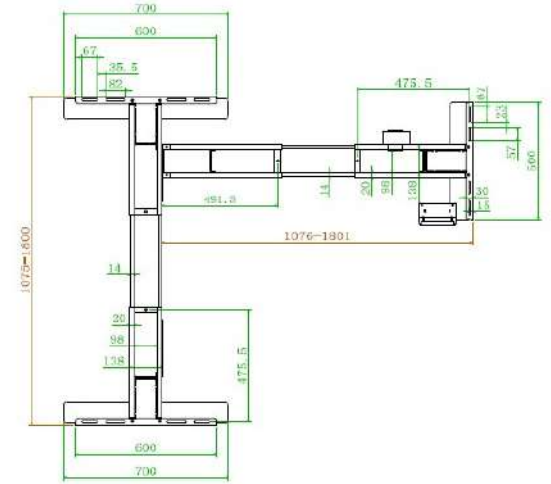
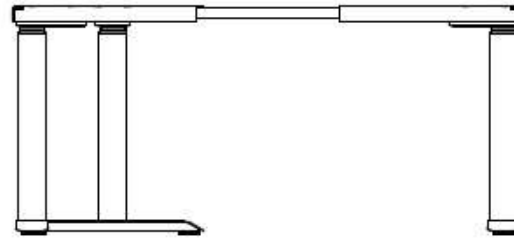
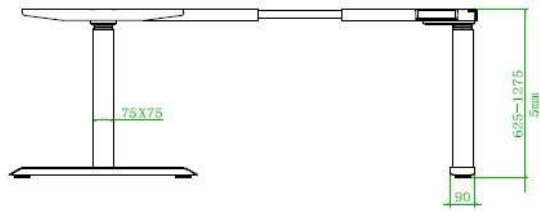
Ring



Speed



Twist (90°)



Ypsilon

