

Report No.: 244543211a 001 Page 1 of 26

Client: NINGBO AOKE OFFICE EQUIPMENT CO.,LT

Contact Information: Science Park, Jiangshan Town, Yinzhou District Ningbo, Zhejiang, P.R. China

**Identification/
Model No(s):** Electric Table Stand
AK02YJEST-TY-A-F-M02
AK2YJYT-TYZF2-M02
AK2YJYT-YZB3-M01
(AK2YJYT-YZB3-M01)*2
AK2YJYT-TYZF3-M02
AK2YJYT-TYZB3-M02
AK2YJYT-ZY3-M02
(AK2YJYT-TYZB3-M02)*2

Condition at delivery: Test item complete and undamaged.

Sample Receiving date: 2023-09-12, 2023-09-25, 2023-10-12

Testing Period: 2023-09-12 to 2023-09-27 & 2023-10-12 to 2023-10-18

Place of testing: Chemical laboratory Shanghai

Test Specification:

Test result:

Customer's requirement:

1. Screening Test by XRF Spectroscopy
According to RoHS (recast): Restriction of the Use of Certain Hazardous Substances in Electrical and Electronic Equipment, 2011/65/EU Annex II and its amendment.

PASS

For and on behalf of
TÜV Rheinland (Shanghai) Co., Ltd.



2023-10-19

Ryan Chen / Section Manager

Date

Name/Position

Sample information is provided by customer. Test result is drawn according to the kind and extent of tests performed.
This test report relates to the above mentioned test sample. Without permission of the test center this test report is not permitted to be duplicated in extracts. This test report does not entitle to carry any safety mark on this or similar products.
"Decision Rule" document announced in our website (<https://www.tuv.com/landingpage/en/qm-gcn/>) describes the statement of conformity and its rule of enforcement for test results are applicable throughout this test report.

Test Report No.: 244543211a 001

Page 2 of 26

Material List:

Item: Electric Table Stand
 AK02YJEST-TY-A-F-M02
 AK2YJYT-TYZF2-M02
 AK2YJYT-YZB3-M01
 (AK2YJYT-YZB3-M01)*2
 AK2YJYT-TYZF3-M02
 AK2YJYT-TYZB3-M02
 AK2YJYT-ZY3-M02
 (AK2YJYT-TYZB3-M02)*2

Material No.	Material	Color	Location
M001	Coating	white	refer to photo
M002	Metal	silver	refer to photo
M003	Plastic	white	refer to photo
M004	Plastic	black	refer to photo
M005	Metal	silver	refer to photo
M006	Metal	silver	refer to photo
M007	Plastic	white	refer to photo
M008	Plastic	black	refer to photo
M009	Foam + adhesive	white	refer to photo
M010	Plastic	transparent	refer to photo
M011	Plastic	transparent	refer to photo
M012	Plastic	black	refer to photo
M013	Metal	silver	refer to photo
M014	Metal	silver	refer to photo
M015	Metal	silver	refer to photo
M016	Metal	silver	refer to photo
M017	Metal	silver	refer to photo
M018	Metal	silver	refer to photo
M019	Metal	silver	refer to photo
M020	Metal	silver	refer to photo
M021	Metal	silver	refer to photo
M022	Plastic	white	refer to photo
M023	Metal	silver	refer to photo
M024	Metal	silver	refer to photo

Test Report No.: 244543211a 001

Page 3 of 26

M025	Metal	silver	refer to photo
M026	Metal	silver	refer to photo
M027	Metal	silver	refer to photo
M028	Metal	silver	refer to photo
M029-1	Metal	black	refer to photo
M030-1	Metal	black	refer to photo
M031	Metal	silver	refer to photo
M032	Metal	light yellow-green	refer to photo
M033	Metal	golden	refer to photo
M034	Plastic	black	refer to photo
M035	Metal	silver	refer to photo
M036	Metal	silver	refer to photo
M037	Metal	black	refer to photo
M038	Metal	silver	refer to photo
M039	Plastic + printing	black/white	refer to photo
M040	Plastic	black	refer to photo
M041	Plastic + printing + adhesive	silver/black	refer to photo
M042	Plastic + printing	white/blue	refer to photo
M043	PCB board	-	refer to photo
M044	Metal	silver	refer to photo
M045	Plastic	black/white	refer to photo
M046	Plastic	transparent	refer to photo
M047	Electronic components	black	refer to photo
M048	Electronic components	black	refer to photo
M049	Metal	silver	refer to photo
M050	Plastic + printing + adhesive	white/black	refer to photo
M051	PCB board	-	refer to photo
M052	Electronic components	black	refer to photo
M053	Plastic	beige	refer to photo
M054	Metal	silver	refer to photo
M055	Electronic components	brown	refer to photo

Test Report No.: 244543211a 001

Page 4 of 26

M056	PCB board	-	refer to photo
M057	Magnet	silver	refer to photo
M058	Electronic components	black	refer to photo
M059	Electronic components	black	refer to photo
M060	Electronic components	grey	refer to photo
M061	Electronic components	black	refer to photo
M062	Electronic components	black	refer to photo
M063	Electronic components	black	refer to photo
M064	Glass	red	refer to photo
M065	Metal	silver	refer to photo
M066	Metal	rose gold	refer to photo
M067	Plastic	black	refer to photo
M068	PCB board	-	refer to photo
M069	Metal	silver	refer to photo
M070	Plastic + printing	dark green/white	refer to photo
M071	Electronic components	-	refer to photo
M072	Metal	silver	refer to photo
M073	Plastic	black	refer to photo
M074	Metal	silver	refer to photo
M075	Plastic	white	refer to photo
M076	Electronic components	blue	refer to photo
M077	Metal	silver	refer to photo
M078	Metal	silver	refer to photo
M079	Plastic	white	refer to photo
M080	Plastic	black	refer to photo
M081	Plastic	black	refer to photo
M082	Plastic	black	refer to photo
M083	Metal	silver	refer to photo
M084	Plastic	black	refer to photo
M085	Plastic	white	refer to photo
M086	Metal	rose gold	refer to photo
M087-1	Plastic	black	refer to photo

Test Report No.: 244543211a 001

Page 5 of 26

M088	Plastic	black	refer to photo
M089	Metal	rose gold	refer to photo
M090	Foam + adhesive	black	refer to photo
M091	Plastic + printing + adhesive	black/white	refer to photo
M092	Plastic	transparent	refer to photo
M093	Plastic	black	refer to photo
M094	Metal	silver	refer to photo
M095	Plastic	black	refer to photo
M096	Plastic	black	refer to photo
M097	Plastic	transparent	refer to photo
M098	Metal	dark red-orange	refer to photo
M099	Metal	red-orange	refer to photo
M100	Graphite	dark green	refer to photo
M101	Gel	white	refer to photo
M102	Plastic	transparent	refer to photo
M103	Metal	silver	refer to photo
M104	Plastic	green	refer to photo
M105	Metal	silver	refer to photo
M106	Plastic	black	refer to photo
M107	Metal	silver	refer to photo
M108	Foam + adhesive	black	refer to photo
M109	Plastic + adhesive	yellow	refer to photo
M110	Plastic	black	refer to photo
M111	Plastic	orange-brown	refer to photo
M112	Metal	rose gold	refer to photo
M113	Plastic + printing	black/yellow	refer to photo
M114	Plastic	yellow	refer to photo
M115	Plastic	white	refer to photo
M116	Plastic	black	refer to photo
M117	Electronic components	dark green	refer to photo
M118	Metal	silver	refer to photo
M119	Ceramic	white	refer to photo

Test Report No.: 244543211a 001

Page 6 of 26

M120	Metal	rose gold	refer to photo
M121	Electronic components	yellow	refer to photo
M122	Plastic	black	refer to photo
M123	Metal	silver	refer to photo
M124	Electronic components	black	refer to photo
M125	Electronic components	black	refer to photo
M126	PCB board	-	refer to photo
M127	Electronic components	black	refer to photo
M128	Plastic	white	refer to photo
M129	Plastic	black	refer to photo
M130	Metal	silver	refer to photo
M131	Plastic	light yellow-green	refer to photo
M132	Plastic	black	refer to photo
M133	Metal	silver	refer to photo
M134	Metal	silver	refer to photo
M135	Metal	silver	refer to photo
M136	Metal	golden	refer to photo
M137	Plastic	transparent	refer to photo
M138	Metal	silver	refer to photo
M139	Metal	silver	refer to photo
M140	Metal	silver	refer to photo
M141	Plastic	white	refer to photo
M142	Metal	silver	refer to photo
M143	Metal	black	refer to photo
M144	Magnet	black	refer to photo
M145	Metal	silver	refer to photo
M146	Electronic components	black	refer to photo
M147	Plastic	light yellow	refer to photo
M148	Metal	silver	refer to photo
M149	PCB board	-	refer to photo
M150	Metal	silver	refer to photo
M151	Metal	red-orange	refer to photo

Test Report No.: 244543211a 001

Page 7 of 26

M152	Plastic	light blue	refer to photo
M153	Gel	dark blue	refer to photo
M154	Metal	dark grey	refer to photo
M155	Plastic	black	refer to photo
M156	Metal	dark red-orange	refer to photo
M157	Metal	dark orange-brown	refer to photo
M158	Metal	silver	refer to photo
M159	Metal	silver	refer to photo
M160	Metal	silver	refer to photo
M161	Plastic	black	refer to photo
M162	Metal	silver	refer to photo
M163	Electronic components	blue	refer to photo
M164	Metal	dark red	refer to photo
M165	Metal	golden	refer to photo
M166	Plastic	dark blue	refer to photo
M167	Plastic	black	refer to photo
M168	Plastic	white	refer to photo
M169	Metal	silver	refer to photo
M170	Plastic	red	refer to photo
M171	Plastic	green	refer to photo
M172	Plastic	black	refer to photo
M173	Plastic	white	refer to photo
M174	Plastic	black	refer to photo
M175	Plastic	white	refer to photo
M176	Plastic	black	refer to photo
M177	Metal	silver	refer to photo
M178	Metal	silver	refer to photo
M179	Plastic	black	refer to photo
M180	Metal	silver	refer to photo
M181	Metal	black	refer to photo
M182	Metal	silver	refer to photo

Test Report No.: 244543211a 001

Page 8 of 26

1.Screening Test by XRF spectroscopy

 Test Method: Cadmium, Lead, Mercury, Chromium, Bromine
 -- With reference to IEC 62321-3-1:2013

Test Result:

Material No.	Cd	Cr	Pb	Hg	Br
M001	BL	BL	BL	BL	BL
M002	BL	BL	BL	BL	n.a.
M003	BL	BL	BL	BL	BL
M004	BL	BL	BL	BL	BL
M005	BL	d*1	BL	BL	n.a.
M006	BL	BL	BL	BL	n.a.
M007	BL	BL	BL	BL	BL
M008	BL	BL	BL	BL	BL
M009	BL	BL	BL	BL	BL
M010	BL	BL	BL	BL	BL
M011	BL	BL	BL	BL	BL
M012	BL	BL	BL	BL	BL
M013	BL	d*1	BL	BL	n.a.
M014	BL	d*1	BL	BL	n.a.
M015	BL	d*1	BL	BL	n.a.
M016	BL	d*1	BL	BL	n.a.
M017	BL	d*1	BL	BL	n.a.
M018	BL	d*1	BL	BL	n.a.
M019	BL	d*1	BL	BL	n.a.
M020	BL	d*1	BL	BL	n.a.
M021	BL	d*1	BL	BL	n.a.
M022	BL	BL	BL	BL	BL
M023	BL	d*1	BL	BL	n.a.
M024	BL	d*1	BL	BL	n.a.
M025	BL	d*1	BL	BL	n.a.
M026	BL	d*1	BL	BL	n.a.
M027	BL	d*1	BL	BL	n.a.
M028	BL	d*1	BL	BL	n.a.
M029-1	BL	d*1	BL	BL	n.a.
M030-1	BL	d*1	BL	BL	n.a.
M031	BL	d*1	BL	BL	n.a.
M032	BL	d*1	BL	BL	n.a.
M033	d*1	BL	d*1	BL	n.a.
M034	BL	BL	BL	BL	BL
M035	BL	d*1	BL	BL	n.a.
M036	BL	d*1	BL	BL	n.a.
M037	BL	d*1	BL	BL	n.a.

Test Report No.: 244543211a 001

Page 9 of 26

M038	BL	d*1	BL	BL	n.a.
M039	BL	BL	BL	BL	BL
M040	BL	BL	BL	BL	BL
M041	BL	BL	BL	BL	BL
M042	BL	BL	BL	BL	d*1
M043	BL	BL	BL	BL	d*1
M044	BL	BL	BL	BL	n.a.
M045	BL	BL	BL	BL	BL
M046	BL	BL	BL	BL	BL
M047	BL	BL	BL	BL	BL
M048	BL	BL	BL	BL	BL
M049	BL	BL	BL	BL	n.a.
M050	BL	BL	BL	BL	BL
M051	BL	BL	BL	BL	d*1
M052	BL	BL	BL	BL	BL
M053	BL	BL	BL	BL	BL
M054	BL	BL	BL	BL	n.a.
M055	BL	BL	BL	BL	BL
M056	BL	BL	BL	BL	d*1
M057	BL	d*1	BL	BL	n.a.
M058	BL	BL	BL	BL	BL
M059	BL	BL	BL	BL	BL
M060	BL	d*1	BL	BL	BL
M061	BL	BL	BL	BL	BL
M062	BL	d*1	BL	BL	BL
M063	BL	BL	BL	BL	BL
M064	BL	BL	d*1	BL	n.a.
M065	BL	BL	BL	BL	n.a.
M066	BL	d*1	BL	BL	n.a.
M067	BL	BL	BL	BL	d*1
M068	BL	BL	BL	BL	BL
M069	BL	BL	BL	BL	n.a.
M070	BL	BL	BL	BL	BL
M071	BL	BL	BL	BL	BL
M072	BL	BL	BL	BL	n.a.
M073	BL	BL	BL	BL	BL
M074	BL	d*1	BL	BL	n.a.
M075	BL	BL	BL	BL	BL
M076	BL	BL	BL	BL	BL
M077	BL	d*1	BL	BL	n.a.
M078	BL	BL	BL	BL	n.a.
M079	BL	BL	BL	BL	d*1
M080	BL	BL	BL	BL	BL

Test Report No.: 244543211a 001

Page 10 of 26

M081	BL	BL	BL	BL	BL
M082	BL	BL	BL	BL	BL
M083	BL	BL	BL	BL	n.a.
M084	BL	BL	BL	BL	BL
M085	BL	BL	BL	BL	BL
M086	BL	BL	BL	BL	n.a.
M087-1	BL	BL	BL	BL	d*1
M088	BL	BL	BL	BL	d*1
M089	BL	BL	BL	BL	n.a.
M090	BL	BL	BL	BL	BL
M091	BL	BL	BL	BL	BL
M092	BL	BL	BL	BL	BL
M093	BL	BL	BL	BL	BL
M094	BL	BL	BL	BL	n.a.
M095	BL	BL	BL	BL	BL
M096	BL	BL	BL	BL	BL
M097	BL	BL	BL	BL	BL
M098	BL	BL	BL	BL	n.a.
M099	BL	BL	BL	BL	n.a.
M100	BL	BL	BL	BL	n.a.
M101	BL	BL	BL	BL	BL
M102	BL	BL	BL	BL	BL
M103	BL	BL	BL	BL	n.a.
M104	BL	BL	BL	BL	BL
M105	BL	d*1	BL	BL	n.a.
M106	BL	BL	BL	BL	d*1
M107	BL	BL	BL	BL	n.a.
M108	BL	BL	BL	BL	BL
M109	BL	BL	BL	BL	BL
M110	BL	BL	BL	BL	BL
M111	BL	BL	BL	BL	BL
M112	BL	BL	BL	BL	n.a.
M113	BL	BL	BL	BL	BL
M114	BL	BL	BL	BL	d*1
M115	BL	BL	BL	BL	d*1
M116	BL	BL	BL	BL	BL
M117	BL	d*1	BL	BL	BL
M118	BL	BL	BL	BL	n.a.
M119	BL	BL	BL	BL	n.a.
M120	BL	BL	BL	BL	n.a.
M121	BL	BL	BL	BL	d*1
M122	BL	BL	BL	BL	BL
M123	BL	BL	BL	BL	n.a.

Test Report No.: 244543211a 001

Page 11 of 26

M124	BL	BL	BL	BL	BL
M125	BL	BL	BL	BL	d*1
M126	BL	BL	BL	BL	d*1
M127	BL	BL	BL	BL	BL
M128	BL	BL	BL	BL	d*1
M129	BL	BL	BL	BL	BL
M130	BL	BL	BL	BL	n.a.
M131	BL	BL	BL	BL	BL
M132	BL	BL	BL	BL	BL
M133	BL	d*1	BL	BL	n.a.
M134	BL	d*1	BL	BL	n.a.
M135	BL	d*1	BL	BL	n.a.
M136	BL	d*1	BL	BL	n.a.
M137	BL	BL	BL	BL	BL
M138	BL	d*1	BL	BL	n.a.
M139	BL	d*1	BL	BL	n.a.
M140	BL	d*1	BL	BL	n.a.
M141	BL	BL	BL	BL	BL
M142	BL	d*1	BL	BL	n.a.
M143	BL	d*1	BL	BL	n.a.
M144	BL	BL	BL	BL	n.a.
M145	BL	d*1	BL	BL	n.a.
M146	BL	BL	BL	BL	BL
M147	BL	BL	BL	BL	d*1
M148	BL	BL	BL	BL	n.a.
M149	BL	BL	BL	BL	d*1
M150	BL	d*1	BL	BL	n.a.
M151	BL	BL	BL	BL	n.a.
M152	BL	BL	BL	BL	BL
M153	BL	BL	BL	BL	BL
M154	BL	d*1	BL	BL	n.a.
M155	BL	BL	BL	BL	BL
M156	BL	BL	BL	BL	n.a.
M157	BL	BL	BL	BL	n.a.
M158	BL	d*1	BL	BL	n.a.
M159	BL	d*1	BL	BL	n.a.
M160	BL	d*1	BL	BL	n.a.
M161	BL	BL	BL	BL	BL
M162	BL	BL	BL	BL	n.a.
M163	BL	BL	BL	BL	BL
M164	BL	BL	BL	BL	n.a.
M165	BL	BL	BL	BL	n.a.
M166	BL	BL	BL	BL	BL

Test Report No.: 244543211a 001

Page 12 of 26

M167	BL	BL	BL	BL	BL
M168	BL	BL	BL	BL	BL
M169	BL	BL	BL	BL	n.a.
M170	BL	BL	BL	BL	BL
M171	BL	BL	BL	BL	BL
M172	BL	BL	BL	BL	BL
M173	BL	BL	BL	BL	BL
M174	BL	BL	BL	BL	BL
M175	BL	BL	BL	BL	BL
M176	BL	BL	BL	BL	BL
M177	BL	BL	BL	BL	n.a.
M178	BL	BL	BL	BL	n.a.
M179	BL	BL	BL	BL	BL
M180	BL	BL	BL	BL	n.a.
M181	BL	d*1	BL	BL	n.a.
M182	BL	d*1	BL	BL	n.a.

Abbreviation: Pb = Lead
Cd = Cadmium
Hg = Mercury
Cr = Chromium
Br = Bromine
n.a. = Not applicable
BL = Below limit
OL = Over limit
d. = Detected

Test Report No.: 244543211a 001

Page 13 of 26

Remark:

- (*1) The screening result was detected in the inconclusive region or over limits, thus the further wet chemistry tests are suggested.
- (*2) Component(s)/ materials(s) with an area of less than 2 mm x 2 mm will not be selected for testing according to RoHS Directive 2011/65/EU due to technical reason.
For the test sample does not have detail materials information provided by client, visually identical materials (e.g. wire insulation, solder points, etc.) will be considered as the same material.
Solder points on a printing circuit board will be examined several times based on optical anomalies or discoloration of the solder point(s) unless the solder point(s) is obviously generated automatically during production.
All other materials will be sampled and tested at one test point representatively.
- (*3) The Chromium (Cr) and Bromine (Br) in the above result table indicate the total chromium and total bromine by means of XRF screening. PBBs, or PBDEs content shall be further confirmed with reference to IEC 62321-6:2015. Chromium (VI) shall be further confirmed with reference to IEC 62321-7-1:2015, IEC 62321-7-2:2017 or EN ISO 17075-1:2017.

XRF Screening limits for different matrices :

Material	Concentration (%)				
	Cd	Cr	Pb	Hg	Br
Polymeric	BL≤0.006<X<0.014≤ OL	BL≤0.064<X	BL≤0.067<X<0.133≤ OL	BL≤0.066<X< 0.134≤OL	BL≤0.029<X
Metallic	BL≤0.006<X<0.014≤ OL	BL≤0.064<X	BL≤0.067<X<0.133≤ OL	BL≤0.066<X< 0.134≤OL	n.a.
Composite materials	BL≤0.004<X<0.016≤ OL	BL≤0.044<X	BL≤0.047<X<0.153≤ OL	BL≤0.046<X< 0.154≤OL	BL≤0.024<X

Remark: The symbol "X" marks the region where further investigation is necessary.

Test Report No.: 244543211a 001

Page 14 of 26

Cadmium, Lead, Chromium (VI), Mercury, Polybrominated biphenyls (PBB) and Polybrominated diphenyl ethers (PBDE)

Test Method: Total Cadmium, Lead, Mercury, Chromium
- Ref. to IEC 62321-4:2013+AMD1:2017 and IEC 62321-5:2013

Chromium (VI)
- For Metal material - Ref. to IEC 62321-7-1:2015
- For Polymer, Electronic material or others materials – Ref. to IEC 62321-7-2:2017

PBBs, PBDEs – Ref. to IEC 62321-6:2015

Test Result:

	Cd	Cr(VI)	Pb	Hg	PBBs	PBDEs
Maximum Permissible Limit (%)	0.01	0.1	0.1	0.1	0.1	0.1

Material No.	(%)					
	Cd	Cr^{VI}	Pb	Hg	PBBs	PBDEs
	RL (%)					
	0.001	0.001	0.001	0.001	0.01	0.01
M033	0.0024	n.a.	2.14 6(c)	n.a.	n.a.	n.a.
M042	n.a.	n.a.	n.a.	n.a.	< RL	< RL
M043	n.a.	n.a.	n.a.	n.a.	< RL	< RL
M051	n.a.	n.a.	n.a.	n.a.	< RL	< RL
M056	n.a.	n.a.	n.a.	n.a.	< RL	< RL
M064	n.a.	n.a.	18.9 7(c)-I	n.a.	n.a.	n.a.
M067	n.a.	n.a.	n.a.	n.a.	< RL	< RL
M079	n.a.	n.a.	n.a.	n.a.	< RL	< RL
M087-1	n.a.	n.a.	n.a.	n.a.	< RL	< RL
M088	n.a.	n.a.	n.a.	n.a.	< RL	< RL
M106	n.a.	n.a.	n.a.	n.a.	< RL	< RL
M114	n.a.	n.a.	n.a.	n.a.	< RL	< RL
M115	n.a.	n.a.	n.a.	n.a.	< RL	< RL
M121	n.a.	n.a.	n.a.	n.a.	< RL	< RL
M125	n.a.	n.a.	n.a.	n.a.	< RL	< RL
M126	n.a.	n.a.	n.a.	n.a.	< RL	< RL
M128	n.a.	n.a.	n.a.	n.a.	< RL	< RL
M147	n.a.	n.a.	n.a.	n.a.	< RL	< RL
M149	n.a.	n.a.	n.a.	n.a.	< RL	< RL

Test Report No.: 244543211a 001

Page 15 of 26

Material No.	Chromium VI content for metal materials ($\mu\text{g}/\text{cm}^2$) (*1) RL: 0.10 $\mu\text{g}/\text{cm}^2$
M005	Negative
M013	Negative
M014	Negative
M015	Negative
M016	Negative
M017	Negative
M018	Negative
M019	Negative
M020	Negative
M021	Negative
M023	Negative
M024	Negative
M025	Negative
M026	Negative
M027	Negative
M028	Negative
M029-1	Negative
M030-1	Negative
M031	Negative
M032	Negative
M035	Negative
M036	Negative
M037	Negative
M038	Negative
M057	Negative
M066	Negative
M074	Negative
M077	Negative
M105	Negative
M133	Negative
M134	Negative
M135	Negative
M136	Negative
M138	Negative
M139	Negative
M140	Negative
M142	Negative
M143	Negative

Test Report No.: 244543211a 001 Page 16 of 26

M145	Negative
M150	Negative
M154	Negative
M158	Negative
M159	Negative
M160	Negative
M181	Negative
M182	Negative

Material No.	Chromium VI content for other materials (%) RL: 0.01%
M060	<RL
M062	<RL
M117	<RL

Abbreviation:

- Pb = Lead
- Cd = Cadmium
- Hg = Mercury
- Cr = Chromium
- Cr (VI) = Chromium (VI)
- PBBs = Total Polybrominated Biphenyls
- PBDEs = Total Polybrominated Diphenyl Ethers
- < = Less than
- RL = Reporting Limit
- n.a. = Not Applicable
- ^ = The total Chromium have been determined
- % = Percentage

Remark:

(*1) The Chromium (VI) content of metal sample in surface layer have been confirmed with reference to IEC 62321-7-1:2015 Annex.

	Chromium (VI) concentration	Qualitative result
Negative	<0.1µg/cm ²	The sample is negative (-ve) for Cr(VI). The Cr(VI) concentration is below the limit of quantification. The coating is considered a non-Cr(VI) based coating
Inconclusive	≥0.1µg/cm ² and ≤0.13 µg/cm ²	The result is considered to be inconclusive. Unavoidable coating variations may influence the determination. Recommendation: if additional samples are available, perform a total of 3 trials to increase sampling surface area. Use the averaged result of the 3 trails for the final determination.
Positive	>0.13 µg/cm ²	The sample is positive (+ve) for Cr(VI). Concentration is above the limit of quantification and the statistical margin of error. The sample coating is considered to contain Cr(VI).

6(c) Copper alloy containing up to 4 % lead by weight

7(c)-I Electrical and electronic components containing lead in a glass or ceramic other than dielectric ceramic in capacitors, e.g. piezoelectronic devices, or in a glass or ceramic matrix compound

Test Report No.: 244543211a 001

Page 17 of 26

BBP, DBP, DEHP, DIBP content

Test Method: ref. to IEC 62321-8:2017

Test Result:

	BBP	DBP	DEHP	DIBP
Maximum permissible Limit (%)	0.1	0.1	0.1	0.1

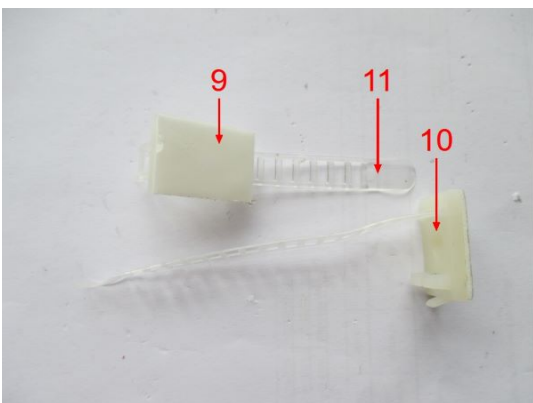
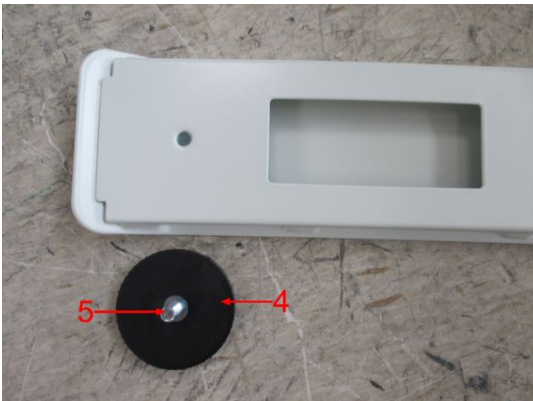
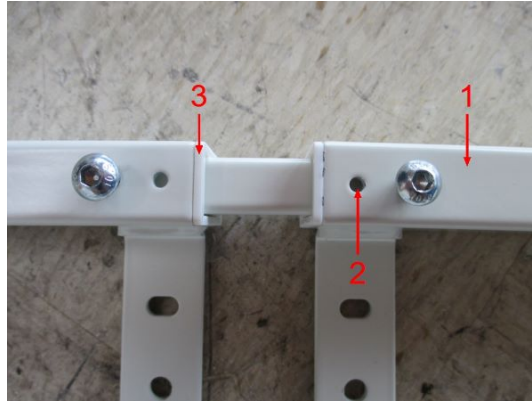
Test No.	Material No.	RL (%)			
		RL (%)			
		BBP	DBP	DEHP	DIBP
		0.005	0.005	0.005	0.005
T001	M001	< RL	< RL	< RL	< RL
T002	M009 + M090 + M108	< RL	< RL	< RL	< RL
T003	M011 + M012 + M073	< RL	< RL	< RL	< RL
T004	M042 + M070 + M091	< RL	< RL	< RL	< RL
T005	M081 + M082 + M084	< RL	< RL	< RL	< RL
T006	M085	< RL	< RL	< RL	< RL
T007	M087-1	< RL	< RL	< RL	< RL
T008	M096	< RL	< RL	< RL	< RL
T009	M101	< RL	< RL	< RL	< RL
T010	M109 + M111 + M113	< RL	< RL	< RL	< RL
T011	M129 + M166 + M167	< RL	< RL	< RL	< RL
T012	M132 + M161	< RL	< RL	< RL	< RL
T013	M170 + M171 + M172	< RL	< RL	< RL	< RL
T014	M173 + M174 + M176	< RL	< RL	< RL	< RL

Abbreviation: BBP= Benzylbutyl phthalate
 DBP= Dibutyl phthalate
 DEHP= Bis(2-ethylhexyl) phthalate
 DIBP= Diisobutyl phthalate
 < = less than
 RL = Reporting Limit
 %= percentage

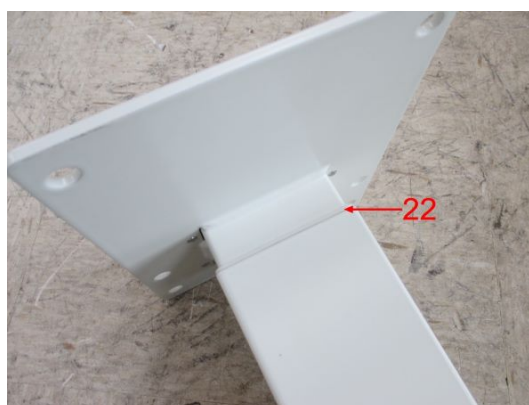
Remark:

- * The maximum permissible limit is required from the amendment (EU) 2015/863 of RoHS Directive 2011/65/EU.

Sample Photos

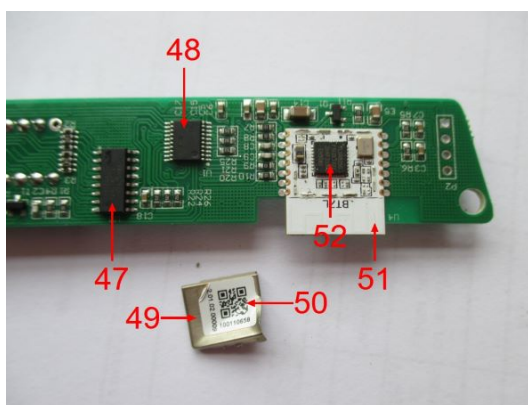
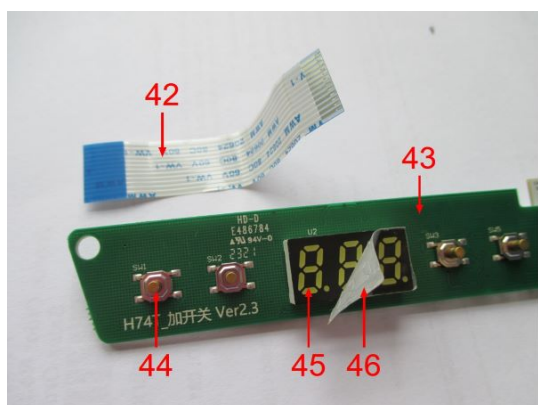
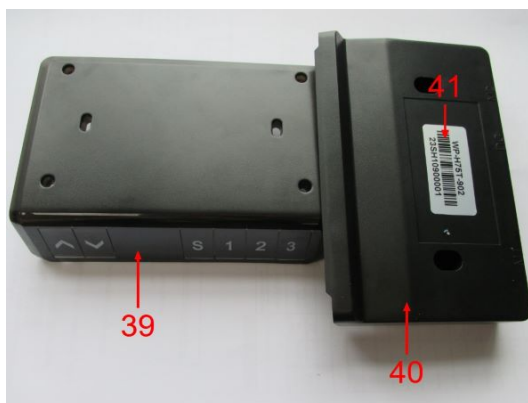
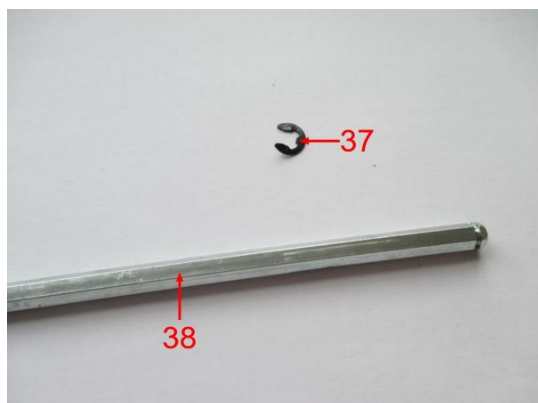
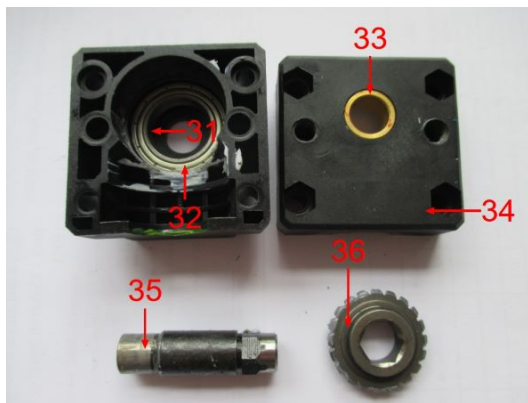
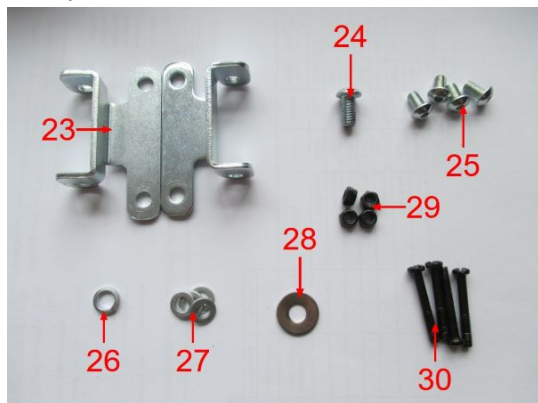


Sample Photos

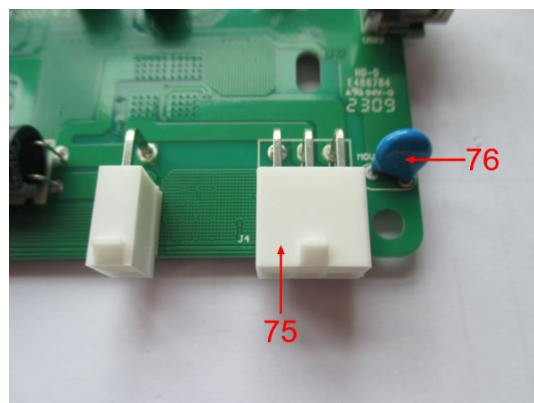
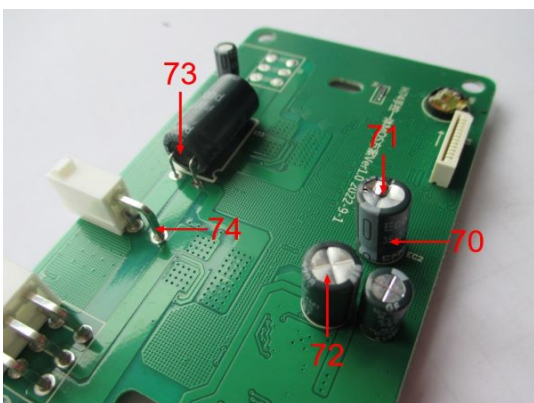
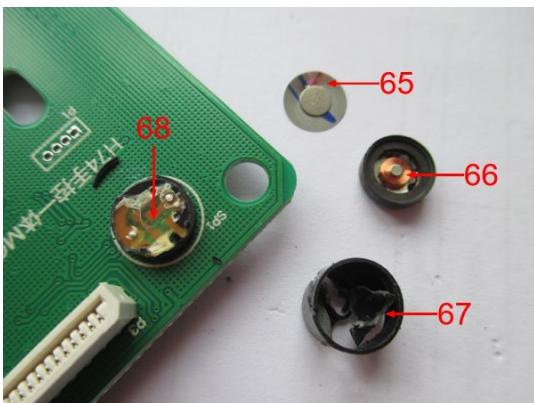
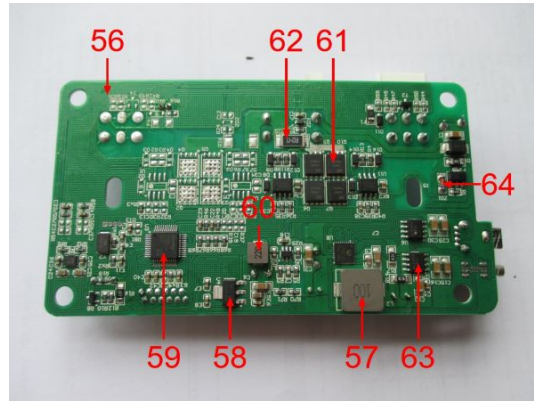
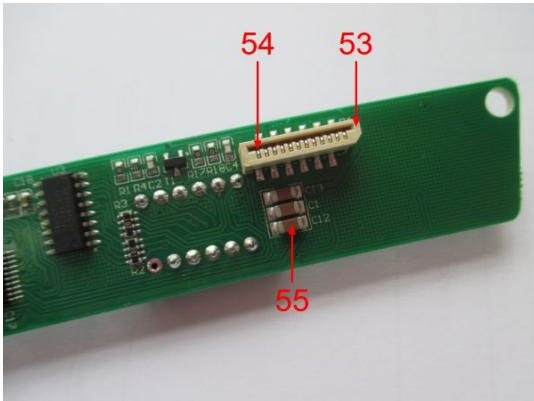


Test Report No.: 244543211a 001 Page 20 of 26

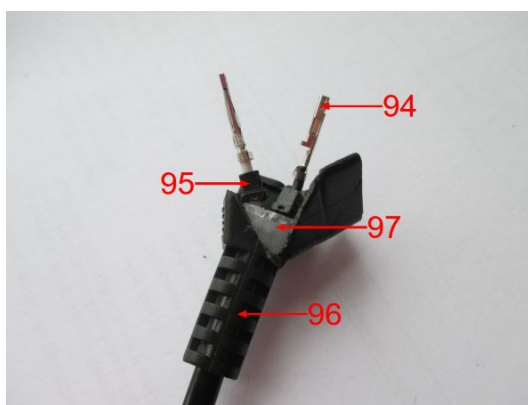
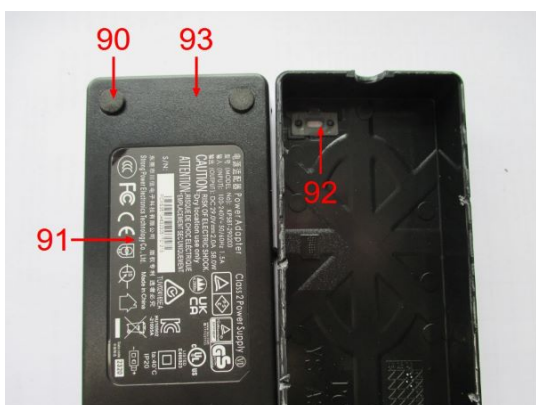
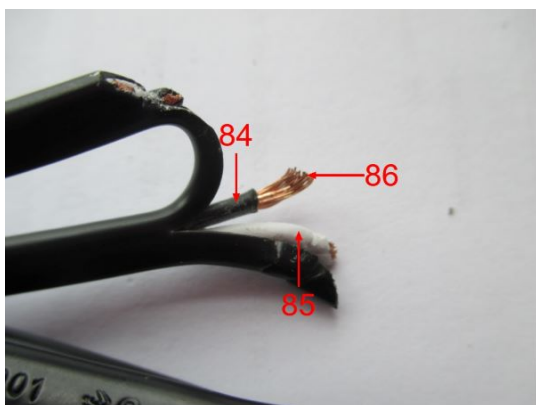
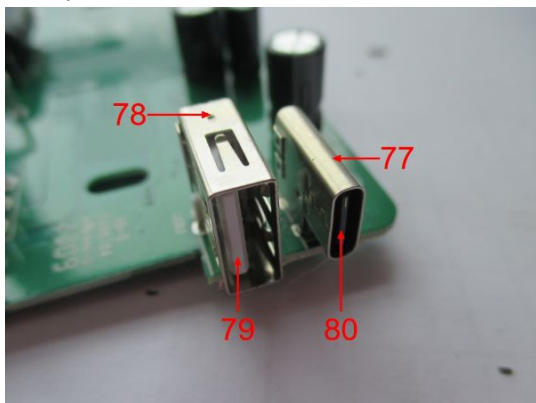
Sample Photos



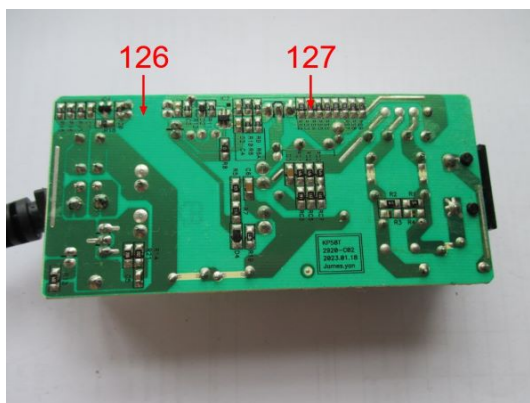
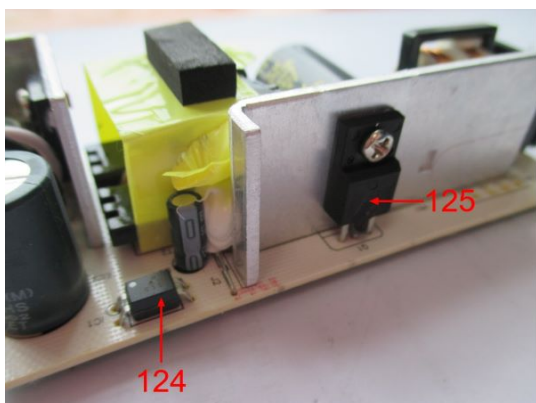
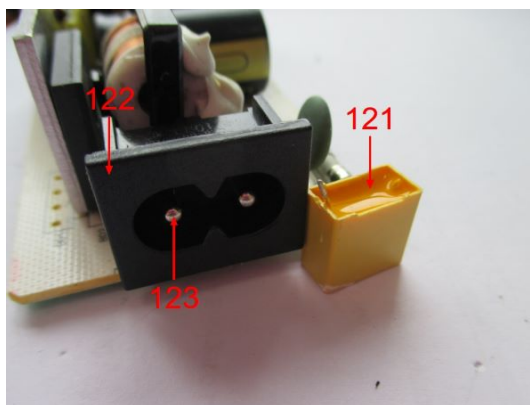
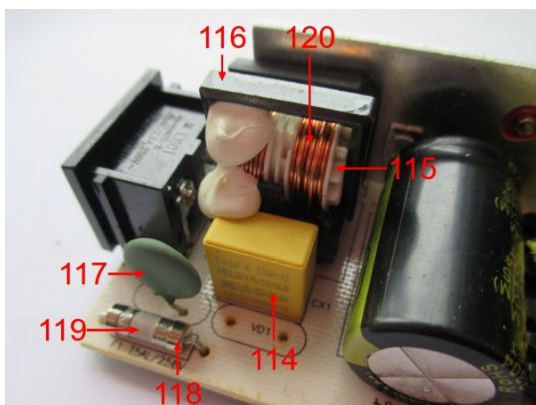
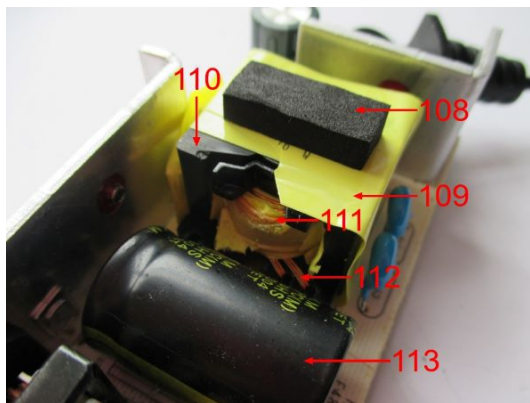
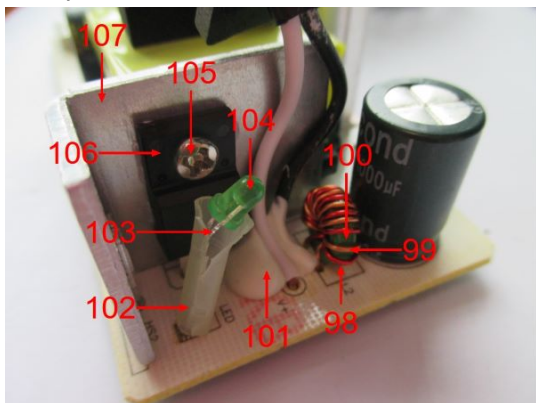
Sample Photos



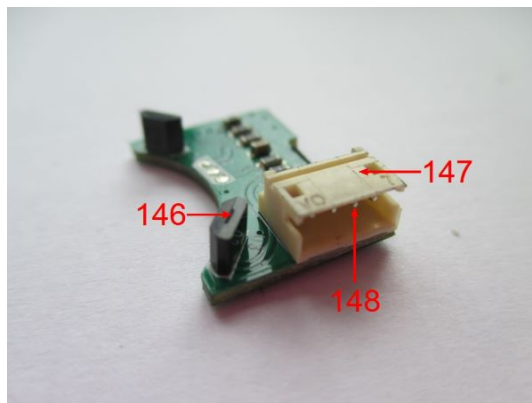
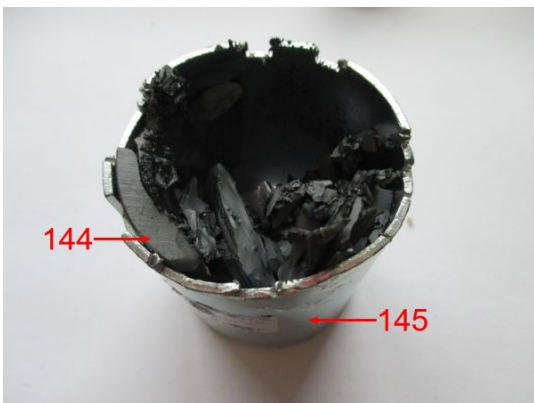
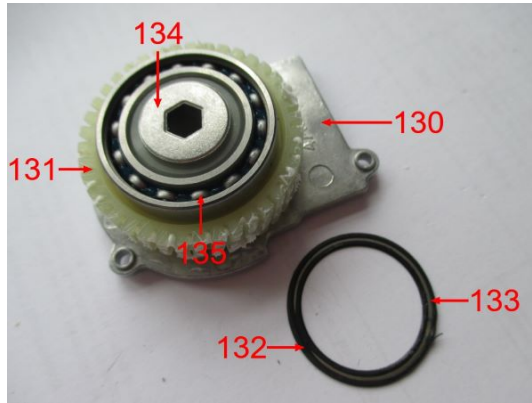
Sample Photos



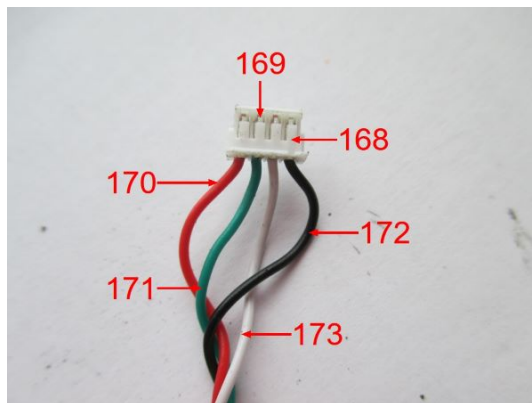
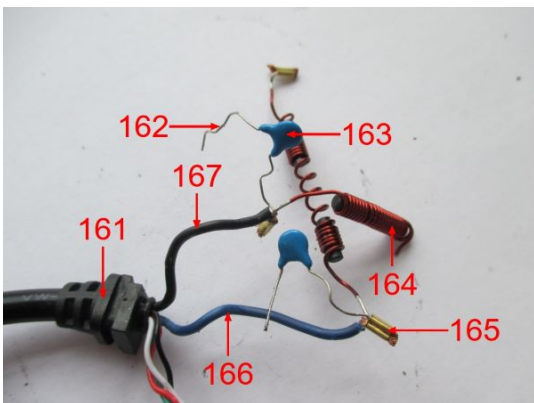
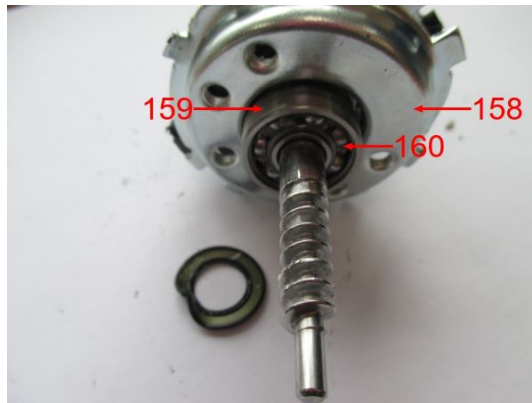
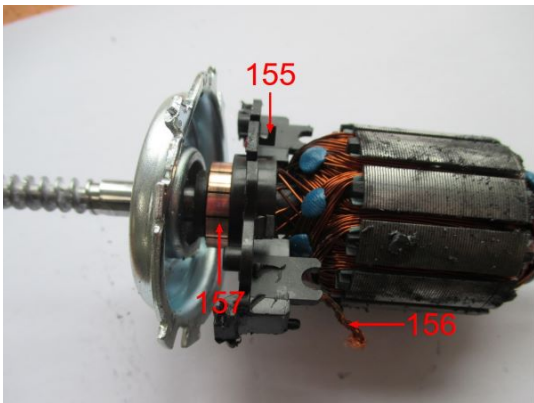
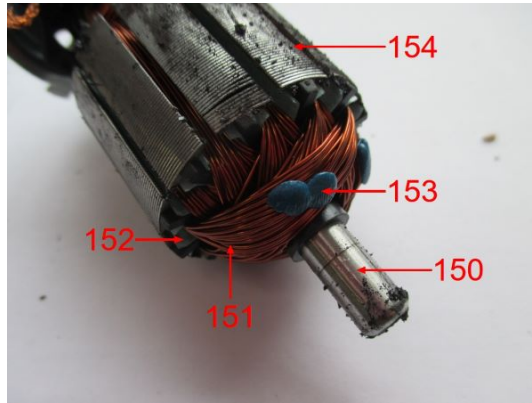
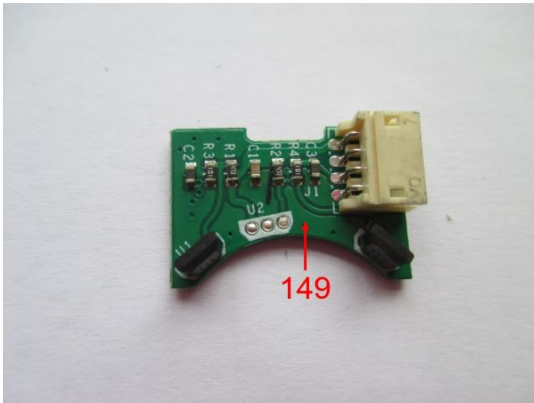
Sample Photos



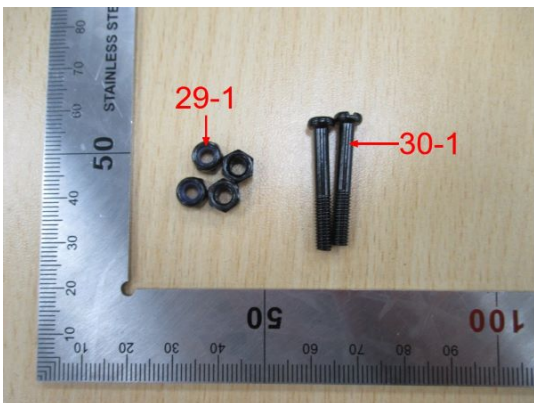
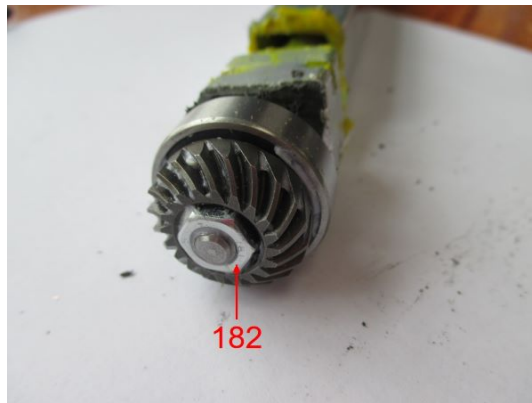
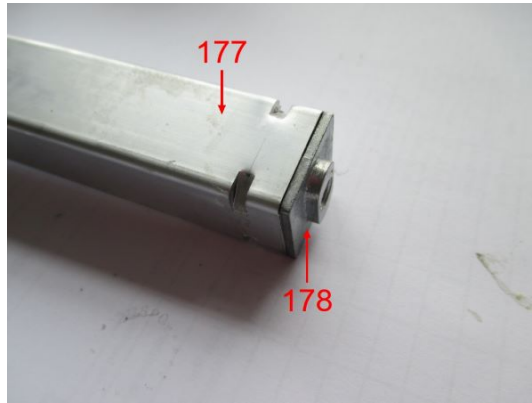
Sample Photos



Sample Photos



Sample Photos



- END -

General Terms and Conditions of Business of TÜV Rheinland in Greater China

1. **Scope**
 - 1.1 These General Terms and Conditions of Business of TÜV Rheinland in Greater China ("GTBCB") is made between the client and one or more member entities of TÜV Rheinland in Greater China as applicable as the case may be ("TÜV Rheinland"). The Greater China here refers to Mainland China, Hong Kong and Taiwan. The client hereof includes:
 - (a) a natural person acting in a legal capacity, including contracts under the applicable laws who concludes the contract not for the purpose of a daily use;
 - (b) the incorporated or unincorporated entity duly organized, validly existing and capable to form legally binding contracts under the applicable law.
 - 1.2 The following terms and conditions apply to agreed services including consultancy services, information, deliveries and similar services as well as ancillary services and other secondary obligations provided within the scope of contract performance.
 - 1.3 Any standard terms and conditions of the client of any nature shall not apply and shall hereby be expressly excluded. No other standard contractual terms and conditions of the client shall form part of the contract even if TÜV Rheinland does not explicitly object to them.
 - 1.4 In the event of an ongoing business relationship with the client, this GTBCB shall also apply to future contracts with the client without TÜV Rheinland having to refer to them separately in each individual case.
2. **Quotations**
 - 2.1 Unless otherwise agreed, all quotations submitted by TÜV Rheinland can be changed by TÜV Rheinland without notice prior to its acceptance and confirmation by the other party.
3. **Coming into effect and duration of contracts**
 - 3.1 The contract shall come into effect for the agreed terms upon the quotation letter of TÜV Rheinland or a separate contractual document being signed by both contracting parties, or upon the request by the client being carried out by TÜV Rheinland. If the client instructs TÜV Rheinland without receiving a quotation from TÜV Rheinland to carry out the work, it is its sole discretion, entitled to accept the order by giving written notice of such acceptance (including notice sent via electronic means) or by performing the requested services.
 - 3.2 The contract term starts upon the coming into effect of the contract in accordance with article 3.1 and shall continue for the term agreed in the contract.
 - 3.3 If the contract provides for a fixed term contract, the contract term will be extended by the term provided for in the contract unless terminated in writing by either party with a three-month notice prior to the end of the contractual term.
4. **Scope of services**
 - 4.1 The scope and type of the services to be provided by TÜV Rheinland shall be specified in the contractually agreed service scope of TÜV Rheinland by both parties. If no such separate service scope of TÜV Rheinland exists, then the written contract or order by TÜV Rheinland shall be decisive for the service to be provided. Unless otherwise agreed, services beyond the scope of the service description (e.g. checking the correctness and functionality of parts, process, process, and installation, organizations not listed in the service description, as well as the intended use and application of such) are not covered. In particular, no responsibility is assumed for the design, selection of materials, construction, use of an examined part, contract, process and plant, unless this is expressly stated in the order.
 - 4.2 The agreed services shall be performed in compliance with the regulations in force at the time the contract is entered into.
 - 4.3 TÜV Rheinland is entitled to determine, in its sole discretion, the method and nature of the assessment, unless otherwise agreed in writing or if mandatory provisions require a specific procedure to be followed.
 - 4.4 On execution of the work there shall be no simultaneous assumption of any guarantee of the correctness (regarding quality and working order) of either tested or examined parts nor of the installation as a whole and its upstream and/or downstream processes, organizations, use and application in accordance with regulations, nor of the systems on which the installation is based. In particular, TÜV Rheinland shall assume no responsibility for the construction, selection of materials and assembly of installations examined, nor for their use and application in accordance with regulations, unless these questions are expressly covered by the contract.
 - 4.5 In the case of inspection work, TÜV Rheinland shall not be responsible for the accuracy or checking of the safety regulations and/or safety requirements for the agreed service scope unless otherwise expressly agreed in writing.
 - 4.6 If mandatory legal regulations and standards or official requirements for the agreed service scope affect the contract, the contract with written notice to the client, TÜV Rheinland shall be entitled to additional remuneration for resulting additional expenses.
 - 4.7 The services to be provided by TÜV Rheinland under the contract are agreed exclusively with the client. A contract of third parties with the services of TÜV Rheinland, as well as making available of a justifying confidence in the work results (test reports, result reports, expert reports, etc.) is not part of the agreed services under the contract and work results are not to be included in extracts - to third parties in accordance with clause 11.4.
 - 4.8 The client understands and agrees that in order to perform the contract with TÜV Rheinland, the client may need to sign or enter into contracts or agreements with a third party(ies) and establish legal relationships with that/those third party(ies) according to such contractual agreements. TÜV Rheinland shall not be liable for the client's legal liability according to this contract and the direct services actually to be provided by our company in the service process. If the relevant services are not directly provided by TÜV Rheinland (including but not limited to any testing and/or inspection work, or safety requirements for the agreed service scope (bodies)), TÜV Rheinland will provide the client as agent for such relevant services. In order to achieve the purpose of the contract, the client hereby agrees that TÜV Rheinland can also subcontract to a third party (and/or subcontractors) the client's work results, including but not limited to the testing and/or certification services to be entrusted and/or applied for by our company (on behalf of the client or third parties) and/or certification services to be entrusted and/or applied for by other third party(ies)). Besides, the client shall be liable in accordance with the relevant laws and regulations actually in force for the client's responsibility to ensure the contract annual review/surveillance of the relevant testing and/or certification service results and pay additional fees in accordance with the relevant laws and regulations or the testing and certification rules, such as not in compliance with the contract, the client shall be responsible for the obligation of such annual review/surveillance and pay the corresponding fees. If the client fails to perform such obligations of the annual review/surveillance or fees payment, it may lead to adverse consequences such as suspension/revocation of the client's approval certificates and results, which shall not be borne by TÜV Rheinland.
 - 4.9 For the services covered in the contract, if the client requires TÜV Rheinland to deliver relevant test samples, data, etc. to any overseas laboratory or other places or sites to be designated by the client, TÜV Rheinland shall not bear any responsibilities or risks for any problems during such delivery and the transportation and handling of such test samples and/or the materials, etc. Besides, the relevant freight fees shall be borne by the client.
5. **Performance periods/dates**
 - 5.1 The contractually agreed periods/dates of performance are based on estimates of the work involved which are prepared in line with the details provided by the client. They shall only be binding if being confirmed as binding by TÜV Rheinland in writing.
 - 5.2 If binding periods of performance have been agreed, these periods shall not commence until the client has submitted all required documents to TÜV Rheinland.
 - 5.3 Articles 5.1 and 5.2 also apply, even without express agreement by the client, to all extensions of agreed periods of performance of TÜV Rheinland.
 - 5.4 TÜV Rheinland is not responsible for a delay in performance, in particular if the client has not fulfilled his duties to cooperate in accordance with the contract or if the client has not provided TÜV Rheinland with all documents and information required for the performance of the service as specified in the contract.
 - 5.5 If the performance of TÜV Rheinland is delayed due to unforeseeable circumstances such as force majeure, strikes, business disruptions, governmental regulations, transport obstacles, etc., TÜV Rheinland is entitled to postpone performance for a reasonable period of time which corresponds at least to the duration of the hindrance plus any time period which may be required to resume performance.
 - 5.6 If the client is obliged to comply with legal, officially prescribed and/or by the accreditor prescribed deadlines, it is the client's responsibility to agree on performance dates with TÜV Rheinland, which enables the client to comply with the legal and/or officially prescribed deadlines. TÜV Rheinland assumes no responsibility in this respect unless TÜV Rheinland has been explicitly asked to writing specifically stating that ensuring the deadlines is the contractual obligation of TÜV Rheinland.
6. **The client's obligation to cooperate**
 - 6.1 The client shall guarantee that all cooperation required on his part, its agents or third parties will be provided in good time and at no cost to TÜV Rheinland.
 - 6.2 Design documents, supplies, auxiliary staff, etc. necessary for performance of the services shall be made available free of charge by the client. Moreover, collaborative action of the client must be undertaken in accordance with legal provisions, standards, safety regulations and accident prevention instructions. And the client represents and warrants that:
 - a) it has required statutory qualifications;
 - b) the product, service or management system to be certified complies with applicable laws and regulations; and
 - c) it doesn't have any illegal and dishonest behaviors or is not included in the list of Enterprises with Serious Illegal and Dishonest Acts of People's Republic of China.
 If the client breaches the aforesaid representations and warranties, TÜV Rheinland is entitled to i) immediately terminate the contract without prior notice, and ii) withdraw the issued testing/recertification certificates if any.
 - 6.3 The client shall bear any additional cost incurred on account of work having to be redone or being delayed as a result of late, incorrect or incomplete information provided by the client or lack of cooperation from the client. Even where a fixed or maximum price is agreed, TÜV Rheinland shall be entitled to charge extra fees for such additional expense.
7. **Prices**
 - 7.1 If the scope of performance is not laid down in writing when the order is placed, invoicing shall be based on costs plus margin. In the case of a written, invoicing shall be made in accordance with the price list of TÜV Rheinland valid at the time of performance.
 - 7.2 If the execution of the work is not agreed in writing or in the contract or if the client and the agreed fixed price exceeds €2,500.00 or equivalent value in local currency, TÜV Rheinland shall be entitled to demand appropriate advance payments.
8. **Payment terms**
 - 8.1 All invoice amounts shall be due for payment within 30 days of the invoice date without deduction on receipt of the invoice. No discounts and rebates shall be granted.
 - 8.2 Payments shall be made to the bank account of TÜV Rheinland as indicated on the invoice, stating the invoice and client numbers.
 - 8.3 In cases of default of payment, TÜV Rheinland shall be entitled to claim default interest at the applicable short-term loan interest rate publicly announced by a reputable commercial bank in the country where TÜV Rheinland is located. At the same time, TÜV Rheinland reserves the right to claim further damages.
 - 8.4 Should the client default in payment of the invoice despite being granted a reasonable grace period, TÜV Rheinland shall be entitled to cancel the contract, withdraw the returned claim, damages for non-performance and refuse to provide further services.
 - 8.5 The provisions set forth in article 8.4 shall also apply in cases involving certificate, claims, cessation of payment, commencement of insolvency proceedings against the client's assets or cases in which the commencement of insolvency proceedings has been declared due to the client.
 - 8.6 Objections to the invoices of TÜV Rheinland shall be submitted in writing within two weeks of receipt of the invoice.
 - 8.7 TÜV Rheinland shall be entitled to demand appropriate advance payments.
- 8.8 TÜV Rheinland shall be entitled to raise its fees at the beginning of a month if overheads and/or purchase costs have increased. In this case, the client shall notify the client in writing of the rise in fees. This notification shall be issued one month prior to the date on which the rise in fees shall come into effect (period of notice - changes in fees). If the rise in fees remains under 5% per contractual year, the client shall not have the right to object. If the rise in fees exceeds 5% per contractual year, the client shall be entitled to terminate the contract by the end of the contractual year. The client shall not be entitled to demand a refund of fees shall be deemed to have been agreed upon by the time of the expiry of the notice period.
- 8.9 Only legally established and undisputed claims may be offset against claims by TÜV Rheinland. TÜV Rheinland shall have the right at all times to setoff any amount due or payable by the client, including but not limited to claims for damages, interest and costs, against any claims, agreement and/or orders/quotations received with TÜV Rheinland.
9. **Acceptance of work**
 - 9.1 Any part of the work result ordered which is complete in itself may be presented by TÜV Rheinland for acceptance as an instalment. The client shall be obliged to accept it immediately.
 - 9.2 If acceptance is required or contractually agreed in an individual case, this shall be deemed to have taken place two (2) weeks after completion of the work, unless the client releases acceptance within this period stating at least one fundamental breach of contract by TÜV Rheinland.
 - 9.3 The client is not entitled to refuse acceptance due to insignificant breach of contract by TÜV Rheinland.
 - 9.4 If acceptance is excluded according to the nature of the work performance of TÜV Rheinland, the completion of the work shall take its place.
 - 9.5 During the Follow-Audit stage, if the client was unable to make use of the time windows provided for within the scope of a certification procedure for auditing performance by TÜV Rheinland and the certificate is therefore to be withdrawn (e.g. performance of surveillance audits), or if the client cancels or postpones a confirmed audit date within two (2) weeks before the agreed date, TÜV Rheinland is entitled to immediately charge a lump-sum compensation of 10% of the order amount (including the cost of preparation for expenses. The client is obliged to pay the agreed amount. TÜV Rheinland has incurred no damage whatsoever or a considerably lower damage than the above lump sum.
 - 9.6 In the event of the client's undertaking to pay a lump-sum compensation of 10% of the order amount as compensation for expenses if the service is not called within one year after the order has been placed. The client reserves the right to provide the TÜV Rheinland with no damage whatsoever or only a considerably lower damage than the above mentioned lump sum.
10. **Confidentiality**
 - 10.1 For the purpose of these terms and conditions, "confidential information" means all know-how, trade secrets, technical data, drawings, designs, specifications, test reports, expert reports, samples, project documents, pricing and financial information, customer and supplier information, and marketing techniques and materials, tangible or intangible, that are supplied, transferred or otherwise disclosed by one party ("disclosing party") to the other party ("receiving party") in writing or orally, in printed or electronic form. Confidential information is expressly not the data and know-how collected, compiled or otherwise obtained by TÜV Rheinland (non-personal and not proprietary to the client) within the scope of the provision of services by TÜV Rheinland. TÜV Rheinland is entitled to store, use, further develop and pass on the data obtained in connection with the provision of services for the purposes of developing new services, improving services and for the provision of services.
 - 10.2 The disclosing party shall mark all confidential information disclosed in written form as confidential and shall receive a copy of the confidential information transmitted by TÜV Rheinland by e-mail. If confidential information is disclosed orally, the receiving party shall be appropriately informed in advance and the disclosing party shall confirm in writing the confidentiality nature of the information within five working days after disclosure. Where the disclosing party fails to do within the stipulated period, the receiving party shall not take any confidentiality obligations towards such information. The client shall avoid using any third party platform and/or services for the transmission of confidential information. The client shall ensure that all employees of TÜV Rheinland, including, but not limited to, subcontractors, are informed of the confidentiality obligations due to any theft or leakages to be caused by the adoption of any unauthorized confidential information sharing methods mentioned above. TÜV Rheinland shall be waived for any confidentiality obligations.
 - 10.3 All confidential information which the disclosing party transmits or otherwise discloses to the receiving party and is created during performance of work by TÜV Rheinland, unless expressly otherwise agreed in writing by the disclosing party, shall be confidential information, unless it is used by the receiving party for the purposes of performing the contract, or unless it is necessary for fulfilling the purpose of the contract or TÜV Rheinland is required to pass on confidential information, inspection reports or documentation to the government authorities, judicial authorities or accreditation bodies. The receiving party shall not be liable for the disclosure of such indirect proposed purchasers, vehicle manufacturers/wholesale equipment manufacturers, test standards or test equipment providers of the client's test products and/or certified products, etc. if such disclosure is necessary for the performance of the contract.
 - 10.4 The receiving party may disclose any confidential information received from the disclosing party to its subcontractors and/or subcontracted services, provided that such subcontractors and/or subcontracted services are bound by confidentiality obligations of the same level of secrecy as set forth in this confidentiality clause.
 - 10.5 If the receiving party has general knowledge without violation of this confidentiality clause by the receiving party, or if the receiving party has already possessed this information prior to disclosure by the disclosing party, or if the receiving party has already disclosed this information to a third party, or if the receiving party is a subcontractor of the disclosing party, TÜV Rheinland shall not be deemed to constitute "confidential information" as defined in this confidentiality clause.
 - 10.6 All confidential information shall remain the property of the disclosing party. The receiving party shall be obliged to immediately return all confidential information to the disclosing party, including all copies, and request the destruction of this confidential information to the disclosing party, at any time if so requested by the disclosing party, but at the latest and without special request after termination or expiry of the contract. This does not extend to include reports and certificates prepared for the client solely for the purpose of fulfilling the obligations under the contract, which shall remain with the client. However, TÜV Rheinland is entitled to make hard copies of such reports, certificates and confidential information that forms the basis for preparing these reports and certificates in order to extend the confidentiality of the information for the documentation purposes required by laws, regulations and the requirements of working procedures of TÜV Rheinland.
 - 10.7 From the start of the contract and for a period of three years after termination or expiry of the contract, the receiving party shall maintain strict secrecy of all confidential information and shall not disclose this information to any third parties or use it for itself.
11. **Copyrights and rights of use, publications**
 - 11.1 TÜV Rheinland shall retain all exclusive copyrights in the reports, expert reports/opinions, test reports/results, result reports/certifications, presentations etc. prepared by TÜV Rheinland, unless otherwise agreed by the client. However, TÜV Rheinland is entitled to publish the reports, test reports/results, result reports/certifications, presentations etc. prepared within the scope of the contract for the contractually agreed purpose.
 - 11.2 The client receives a simple, unlimited, non-transferable, non-sublicensable right of use to the contents of the work results produced within the scope of the contract, unless otherwise agreed by the client in a separate agreement. The client is entitled to use the work results, test reports/results, result reports/certifications, presentations etc. prepared within the scope of the contract for the contractually agreed purpose.
 - 11.3 The client is entitled to use the results of the generated work results regulated in clause 11.2 of the GTBCB as subject to full payment of the remuneration agreed in favour of TÜV Rheinland.
 - 11.4 The client is entitled to use the results of the generated work results only if they only pass on the work results in full unless TÜV Rheinland has given its prior written consent to the partial passing on of work results.
 - 11.5 Any publication or duplication of the work results for advertising purposes or any further use of the work results beyond the scope regulated in clause 11.2 and any quotation of the introduction of TÜV Rheinland need the prior written approval of TÜV Rheinland in each individual case. Besides, the client ensures that the aforesaid use shall comply with relevant applicable laws, regulations and relevant rules (including but not limited to specific applicable testing and certification rules, etc.).
 - 11.6 TÜV Rheinland may revoke a given approval according to clause 11.5 at any time without stating reasons. In this case, the client is obliged to stop the transfer of the work results immediately at his own expense and, as far as possible, to withdraw publications.
 - 11.7 The client is not entitled to use the work results for the purpose of advertising or to disclose the client to use the corporate logo, corporate design or trademark/copyright mark of TÜV Rheinland.
12. **Liability of TÜV Rheinland**
 - 12.1 In respect of the legal basis, to the fullest extent permitted by applicable law, in the event of a breach of contractual obligations or tort, the liability of TÜV Rheinland for all damages, losses and reimbursement of expenses caused by TÜV Rheinland, its legal representatives and/or employees shall be limited to: (i) in the case of a contract with a fixed overall fee, three times the overall fee for the entire contract; (ii) in the case of a contract for an annually recurring services, the agreed annual fee; (iii) in the case of a contract expressly charged for a time and material basis, a maximum of 20,000 Euro or equivalent amount in local currency; and (iv) in the case of a framework agreement that provides for the possibility of placing individual orders, three times of the fee for the individual order. The maximum amount of liability shall be limited to the amount of damages and compensation that the total and accumulated liability calculated according to the foregoing provisions exceeds 2.5 Million Euro or equivalent amount in local currency, the total and accumulated liability of TÜV Rheinland shall be only limited to the amount of damages and compensation calculated according to the above.
 - 12.2 The limitation of liability according to article 12.1 above shall not apply to damages and/or losses caused by malice, intent or gross negligence on the part of TÜV Rheinland or its employees. Such limitation shall not apply to damages for a person's death, physical injury or illness.
 - 12.3 In cases involving a fundamental breach of contract, TÜV Rheinland will be liable even for a minor negligence or for the purpose of a fundamental breach of a material contractual obligation, the performance of which permits the due performance of the contract. Any claim for damages for a fundamental breach of contract shall be limited to the amount of damages reasonably foreseeably as a possible consequence of such breach of contract at the time of the breach (reasonably foreseeable damages), unless any of the circumstances described in article 12.2 applies.
 - 12.4 TÜV Rheinland shall not be liable for the acts of the personnel made available by the client to support TÜV Rheinland in the performance of its services under the contract, unless such personnel have been made available in violation of the contract. If TÜV Rheinland is not liable for the acts of the personnel made available by the client under the foregoing provision, the client shall indemnify itself against any claims made by third parties arising from, in or connection with such personnel's acts.
 - 12.5 Unless otherwise contractually agreed in writing, TÜV Rheinland shall only be liable under the contract to the client.
 - 12.6 The limitation periods for claims for damages shall be based on statutory provisions.
 - 12.7 None of the provisions of this article 12 changes the burden of proof to the disadvantage of the client.
13. **Export control**
 - 13.1 When passing on the services provided by and/or services referred to third parties in Greater China or other regions, the client must comply with the applicable regulations of national and international export control law.
- 13.2 The performance of a contract with the client is subject to the proviso that there are no obstacles to the performance due to national or international export trade legislation or embargoes and/or sanctions. In the event of a violation, TÜV Rheinland shall be entitled to terminate the contract with immediate effect and the client shall compensate for the losses incurred thereof by TÜV Rheinland.
- 13.4. **Data protection notice**
 - 13.4.1 The client understands and agrees that TÜV Rheinland processes personal data (including but not limited to personal information) of the client and its related parties (including but not limited to the supplier of the client) for the purpose of fulfilling the contract. The client confirms that it has reviewed the content of the data subject, which includes TÜV Rheinland to access, use, or process the personal data that the client collected or processed by itself and transferred to TÜV Rheinland. For certain services, we may also process sensitive personal data. TÜV Rheinland will use and process data in accordance with applicable laws and regulations. If any personal data is disclosed or transferred to any third party or any overseas party outside of the district in which the personal data was collected, the client also confirms that it has reviewed the prior consent of the data subject. TÜV Rheinland will carry out cross-border data transmission and protect the data in compliance with the privacy and personal data security related laws and regulations in China and the local country. TÜV Rheinland will take measures to avoid any leakage, abuse, manipulation, damage or unauthorized access of personal data. The personal data will be deleted immediately as soon as a corresponding request for deletion arises. Data subjects may exercise the following rights: right of information, right of decision, right of rectification, right of deletion, right of processing limitation, right of objection, right of data transferability. In addition, persons concerned by the data processing have the right to revoke their consent at any time with effect for the future, as well as the right to file a complaint with the competent data protection supervisory authority. For further details on the processing of personal data by TÜV Rheinland as the person responsible or contract processor, please refer to the respective data protection information. You can contact the Group Data Protection Officer (DPO) by e-mail at dataprotection@tuv.com or by post at the following address: TÜV Rheinland AG, c/o Group Data Protection Officer, Am Grauen Stein, 51105 Cologne, Germany.
15. **Retention of test material and documentation**
 - 15.1 The test samples submitted by the client to TÜV Rheinland for testing will be scrapped following testing or will be returned to the client at the client's expense. The only exceptions are test samples, which are placed in storage on the basis of statutory regulations or of another agreement with the client.
 - 15.2 Charges apply if the test samples are stored at the premises of TÜV Rheinland. The cost of placing a test sample into storage will be disclosed to the client in the quotation.
 - 15.3 If relevant reports or documents are given to the client to be placed in storage at their premises, the reference samples or documentations must be made available to TÜV Rheinland upon request promptly and free of charge. If the client, in response to such a request, is incapable of making available the reference samples and/or documentations, any liability claims for material and pecuniary damage resulting from the respective testing and certification that is brought forward by the client against TÜV Rheinland shall be void.
 - 15.4 The retention period for the documentation shall be 10 (ten) years after the expiry of the test mark certificates or shall meet the applicable legal requirements for EU/EEC certificates of conformity and GS mark certificates.
 - 15.5 The costs of the handover and dispatch of the test samples for storage on the client's premises are borne by the client. TÜV Rheinland will be liable for the loss of test samples or reference samples from the laboratories or warehouses of TÜV Rheinland only in case of gross negligence.
16. **Termination of the contract**
 - 16.1 Notwithstanding clause 3.3 of the GTBCB, TÜV Rheinland and the client are entitled to terminate the contract at its entry into, or in the case of services continued in one contract, each of the combined contracts, or individually or independently of TÜV Rheinland, at any time after the contract has been entered into with six (6) months' notice to the end of the contractually agreed term. The notice period shall be shortened to 30 (thirty) days in case of TÜV Rheinland is prevented from performing the services due to loss or suspension of its accreditation or notification.
 - 16.2 For good causes, TÜV Rheinland may consider giving a written notice to the client to terminate the contract if the client fails to pay the relevant service fees for the services provided by TÜV Rheinland due to the termination date of the contract. The address of good causes includes but not limited to the following:
 - a) the client's failure to pay the service fees for the services provided by TÜV Rheinland;
 - b) the client misuses the certificate or certification mark or uses it in violation of the contract;
 - c) the client's failure to pay several consecutive debts in payment to TÜV Rheinland;
 - d) a substantial deterioration of the financial circumstances of the client occurs and as a result the payment obligations of TÜV Rheinland under the contract are considerably endangered and TÜV Rheinland cannot reasonably expect to continue to be paid for the services provided by TÜV Rheinland;
 - e) in the event of any serious misrepresentation, be it by intentional fraud or grossly negligent fraud;
 - f) if TÜV Rheinland, for reasons beyond its control, is temporarily or finally not able or entitled to continue or finalize the performance of the service, e.g. in case of force majeure, government intervention or sanctions;
 - g) if the country/region involved in the whole contract or the specific service project in the contract does not belong to the insurance coverage area of TÜV Rheinland; and TÜV Rheinland is not able to reasonably be expected to continue to be paid for the services provided by TÜV Rheinland.
 In the event of termination with written notice by TÜV Rheinland for good cause, TÜV Rheinland shall be entitled to a lump-sum compensation of 10% of the remuneration to be paid under the contract for damages it incurs. In this case, the client shall also 15% of the remuneration to be paid under the end of the fixed contract term as lump-sum compensation. The client reserves the right to prove that there is no loss of income of the time windows for auditing services provision provided by TÜV Rheinland with the scope of a certification procedure and the certificate therefore has to be withdrawn (for example during the performance of monitoring audits). Clause 16.3 applies accordingly.
17. **Force Majeure**
 - 17.1 The force majeure means the occurrence of an event or circumstance that prevents or impedes a Party from performing one or more of its contractual obligations under the contract, and if to the extent that that Party proves: (a) that such impediment is beyond its reasonable control; and (b) that it could not reasonably have been foreseen at the time of the conclusion of the contract; and (c) that the effects of the impediment could not reasonably have been avoided or overcome by the affected Party.
 - 17.2 In the absence of proof to the contrary, the following events affecting a Party shall be presumed to fulfill conditions (a) and (b) under paragraph 1 of this Clause: (i) war (whether declared or not), insurrection, invasion, armed conflict, general labor disturbance such as boycott, strike and lock-out, rebellion and revolution, military or usurped power, insurrection, act of terrorism, sabotage or piracy; (ii) currency and trade restriction, embargo, sanction; (iii) act of authority whether lawful or unlawful; (iv) compliance with any law or governmental regulation, security of works, security of works, regulation, nationalization; (v) plague, epidemic, natural disaster or extreme natural event; (vi) explosion, fire, destruction of equipment, prolonged breakdown of transport, telecommunication, information system or energy; (vii) general labor disturbance such as boycott, strike and lock-out, go-slow, occupation of factories and premises.
 - 17.3 The force majeure event shall be presumed to have occurred if the Party is prevented from performing the contract and from any liability in damages or from any other contractual remedy, for breach of contract, from the time at which the impediment causes inability to perform; provided that the notice is given without any delay. If notice thereof is not given within the time limit, the relief is effective from the time at which notice thereof reaches the other Party. Where the effect of the impediment or event involved is temporary, the above consequences shall apply only as long as the impediment or event impedes performance by the affected Party. Where the effect of the impediment or event has the effect of substantially depriving the contracting Parties of what they were reasonably entitled to expect under the contract, either Party has the right to terminate the contract by notification within a reasonable period of time after the occurrence of the force majeure event, expressly agree that the contract may be terminated by either Party if the duration of the impediment exceeds 120 days.
18. **Hardship**
 - 18.1 The Parties are bound to perform their contractual duties even if events have rendered performance more onerous than could reasonably have been anticipated at the time of the conclusion of the contract.
 - 18.2 Notwithstanding paragraph 1 of this Clause, where a Party proves that: (a) the continued performance of its contractual duties has become excessively onerous due to an event beyond its reasonable control which it could not reasonably have been expected to have taken into account at the time of the conclusion of the contract; and that (b) it could not reasonably have avoided or overcome the event or its consequences, the Parties are bound, within a reasonable time of the invocation of this Clause, to negotiate alternative contractual terms which reasonably allow to overcome the consequences of the event.
 - 18.3 Where Clause 18.2 applies, but where the Parties have been unable to agree alternative contractual terms as provided in that paragraph, the Party invoking this Clause is entitled to terminate the contract, but cannot request adaptation by the judge or arbitrator without the agreement of the other Party.
19. **Partial invalidity, written form, place of jurisdiction and dispute resolution**
 - 19.1 All amendments and supplements must be in writing in order to be effective. This also applies to amendments and supplements to clause 17.1.
 - 19.2 In the event of the partial invalidity of the provisions under the contract and/or these terms and conditions be or become ineffective, the contracting parties shall replace the invalid provision with a legally valid provision that comes closest to the content of the invalid provision, provided that the replacement is not manifestly disadvantageous to the contracting party.
 - 19.3 Unless otherwise stipulated in the contract, the governing law of the contract and these terms and conditions shall be chosen following the rules as below:
 - a) TÜV Rheinland in question is legally registered and existing in the People's Republic of China, the contracting parties hereby agree that the contract and these terms and conditions shall be governed by the laws of the People's Republic of China.
 - b) TÜV Rheinland in question is legally registered and existing in Taiwan, the contracting parties hereby agree that the contract and these terms and conditions shall be governed by the laws of the Republic of China.
 - c) If TÜV Rheinland in question is legally registered and existing in Hong Kong, the contracting parties hereby agree that the contract and these terms and conditions shall be governed by the laws of Hong Kong.
 - 19.4 Any dispute in connection with the contract and these terms and conditions or the execution thereof shall be settled through negotiations. Unless otherwise stipulated in the contract, no settlement or no agreement in respect of the extension of the negotiation period can be reached within two months of the arising of the dispute, the dispute shall be referred to the arbitration institution in the place of the arbitration institution in the case of TÜV Rheinland in question being legally registered and existing in the People's Republic of China, to China International Economic and Trade Arbitration Commission (CIETAC) or in the case of TÜV Rheinland in question being legally registered and existing in Taiwan, to Chinese Arbitration Association, Taipei to be arbitrated in accordance with its then current Rules of Arbitration. The arbitration shall take place in Taipei.
 - 19.5 In the case of TÜV Rheinland being legally registered and existing in Hong Kong, to Hong Kong International Arbitration Centre (HKIAC) to be arbitrated in Hong Kong by the HKIAC Administered Arbitration Rules in force when the Notice of Arbitration is submitted in accordance with these Rules. The arbitration shall take place in Hong Kong.
 - 19.6 The decision of the relevant arbitration tribunal shall be final and binding on both parties. The arbitration fee shall be borne by the losing party.